

# MyPath:

## Career/Assessment solutions for the student's journey through education to employment

**Lynell Wiggins, Strong Workforce, CCCCCO**

**Brook Oliver, Career Counselor, Sierra College**

**Angela Baucom, Product Manager, CCCTC**





# Agenda

## **Converging System Initiatives**

- **Overview of changing perspective and policies around student success**

## **Education Planning Initiative**

- **Brief history & goals**

## **Career Coach to support education and career planning**

- **Demonstration with Labor Market Data**

## **MyPath - Provides Technology toolkit**

- **Brief description, role, status**



# Task for Today



## SB1456 Student Success Act of 2012



- How did we arrive where we are today?
- “Just in Time” vs. “Just in Case” Matriculation
- The SSSP and the Strong Workforce Program Student Success Recommendations lead to **n**ew **c**areer **r**esources



# Seeking To Maintain Successes

## Challenges Within the CCC System

1

- High English and math remediation levels

2

- Inconsistencies between HS & college curriculum

3

- Unaware of educational objectives upon applying

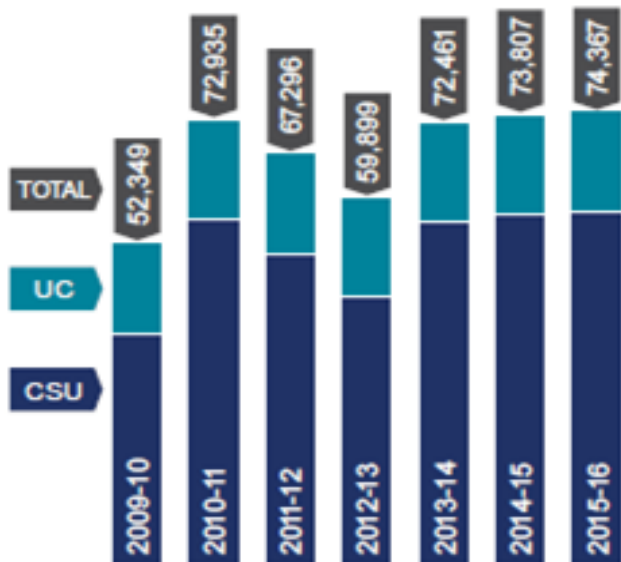
4

- Counselor ratios of 800:1 & more than 1800:1

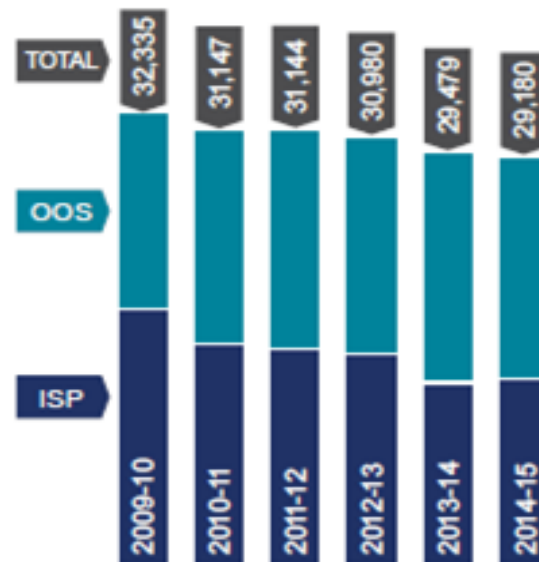


# Transfer Reality

ANNUAL NUMBER OF COMMUNITY COLLEGE TRANSFERS TO CALIFORNIA STATE UNIVERSITY (CSU) AND UNIVERSITY OF CALIFORNIA (UC) SYSTEMS



ANNUAL NUMBER OF COMMUNITY COLLEGE TRANSFERS TO IN-STATE PRIVATE (ISP) AND OUT-OF-STATE (OOS) INSTITUTIONS\*



\*Transfers to California State University and University of California systems not included.

From the 2016 State of the System Report, p. 13



# Student Success Act of 2012

Gov. Jerry Brown signed into law the Student Success Act of 2012, the legislative cornerstone of a California Community Colleges reform initiative aimed at **improving educational outcomes** for students and **better preparing the workforce** needed for California's changing economy.

- **Goal:** Help more California community college students reach their goal of earning a degree, certificate, career advancement or transferring to a four-year institution.



## Convergence Precepts

### 1. Organizing Principle

### 2. College and Career Readiness Approach

\*Emphasis added by L. Wiggins in 4.1 and 3.4

## Student Success

## Task Force Recommendations



**4.1** Highest priority for course offerings shall be given to credit and noncredit courses that advance students' academic progress in the areas of basic skills, ESL, CTE, degree and certificate attainment, and transfer, in the ***context of labor market and economic development needs of the community.***



**3.4** Community colleges will require students to begin addressing basic skills needs in their first year and will provide resources and options for them to ***attain the competencies*** needed to succeed in college-level work as part of their education plan.



## Convergence Precepts

## Student Success Task Force

### Rec.

# 3. Our Primary Challenge is Prescription

3A

2.4 Require students whose *diagnostic assessments* show a lack of readiness for college to participate in a support resource, such as a student success course, learning community, or other sustained intervention, provided by the college for new students.

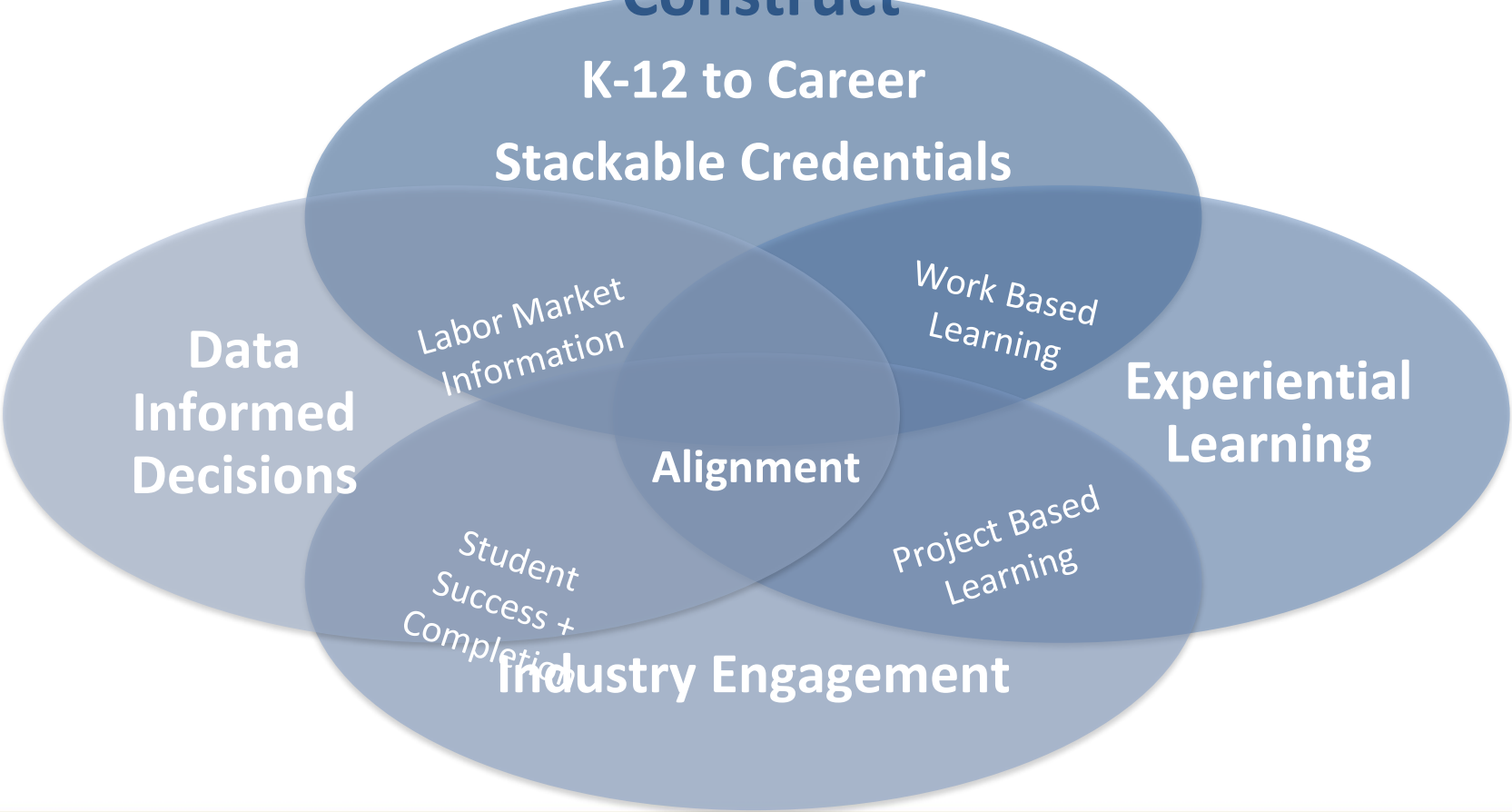
3B

3.1 The Community Colleges will adopt system-wide enrollment priorities that: (1) reflect the core mission of transfer, career technical education and basic skills development; (2) encourage students to identify their educational objective and ***follow a prescribed path most likely to lead to success***; (3) ensure access and the opportunity for success for new students; and (4) incentivize students to make progress toward their educational goal.

\*Emphasis added by L. Wiggins in 2.4 and 3.1



# System Reform Strategy: The Career Pathways Construct





# Strong Workforce Taskforce Recommendations

- Student Success
- Workforce Data & Outcomes
- Curriculum
- Career Pathways
- CTE Faculty
- Regional Coordination
- Funding



CALIFORNIA COMMUNITY COLLEGES

Doing What **MATTERS**™

FOR JOBS AND THE ECONOMY

## What We Learned From The Field?



CALIFORNIA COMMUNITY COLLEGES

Task Force on

**WORKFORCE**

JOB CREATION AND A STRONG ECONOMY

- **Skills gap** and little understanding for how to navigate careers
- In many cases, we heard **higher education isn't enough to prepare our generation for today's landscape. More job-training programs are needed** for our generation to move past that entry-level job.
- There was a **shared fear** that **college costs** will prevent them from pursuing post-secondary degrees they consider critical.



## Use of \$200M Strong Workforce Program More and Better...

- Increase quantity of CTE
  - Improve quality of CTE
- Courses, programs, pathways, credentials (licensure), certificates, degrees

**Requirement: labor market demand!**



## Strong Workforce Taskforce Recommendations

**1a.** Provide resources for student support and career center services to raise the **awareness of career planning** and provide information to high school, adult education and community college students on **labor market demand and earnings potential**.

**1b.** Develop and implement common, effective career and educational planning tool for high school, adult education and community college counselors to provide **detailed and comprehensive information, resources, and support on career awareness, preparation, and exploration**; CTE pathway and education planning; workplace-readiness skills; work-based learning opportunities; and local and regional employer needs and job requirements.



## Strong Workforce Taskforce Recommendations

**1d.** Collaborate with workforce boards to enhance capacity to **provide career counseling**, job placement, and supportive services.

**1e.** Enhance capacity of counselors to provide **CTE-related program counseling** through professional development and the sharing of best practices such as designating counselors as CTE specific or designating liaisons to CTE programs.



## Our new reality in the CCC...

- High School and Community College partnerships are the key to helping students reach readiness standards that will excite business and industry; as well as state legislators
- College is a necessity if you are to be prepared for a living wage job
- Counselors and Student Services professionals will require a reboot toward placing transfer in its proper place to increase individuals sub-baccalaureate credential attainment
- Flipping the college decision-making paradigm advances the cause of helping adolescents transition toward adult decision-making



# Education Planning Initiative (EPI)

- SB-1456 outlined Student Success
- EPI was developed to respond to and implement key recommendations of Student Success Act **with tools**
- Primary focus of EPI is to strengthen support and guidance to students
- California Community College Technology Center

[www.CCCEdPlan.org](http://www.CCCEdPlan.org)







## The Vision & Goal: *Structure pathways that support planning/progress*

**Directed**—Learn to navigate using new toolsets

**Obstacles Eliminated**—High touch, my college cares

**Focused**—My goal is connected to my career

**Engaged**—Connected to resources/opportunities

Report, RP Group  
[www.rpgroup.org](http://www.rpgroup.org)



## EPI Program Outcomes

- Help students make informed choices
- Assist in clarifying goals for students
- Support the requirement that students have a stated goal by 15 units
- Promote and support coordination between CCC/UC/CSU
- Reduce the time it takes students to complete their goal (degree, certificate, or transfer)



# MyPath

## STUDENT SERVICES AND DEGREE PLANNING

Student Focused.  
Student Driven.



[www.ccedplan.org](http://www.ccedplan.org)



### Faith Freshman

Age 19- Hispanic Female

- 1st year student direct from HS
- Goal to transfer to university
- Unclear about major/work goals
- Athlete - prefers team sports
- Uses mobile phone as computer



### Regina Returning

Age 29- Hispanic Female

- Full-time employed single mom
- 1st Generation to attend college
- Returning student
- Applying for BOG Fee Waiver
- Uses mobile phone as computer



### Frank Fosterisk

Age 22- "At Risk" White Male

- Foster Youth
- 2nd Year Student
- On academic probation
- On financial aid warning
- Specific skills seeking
- Basic skills student

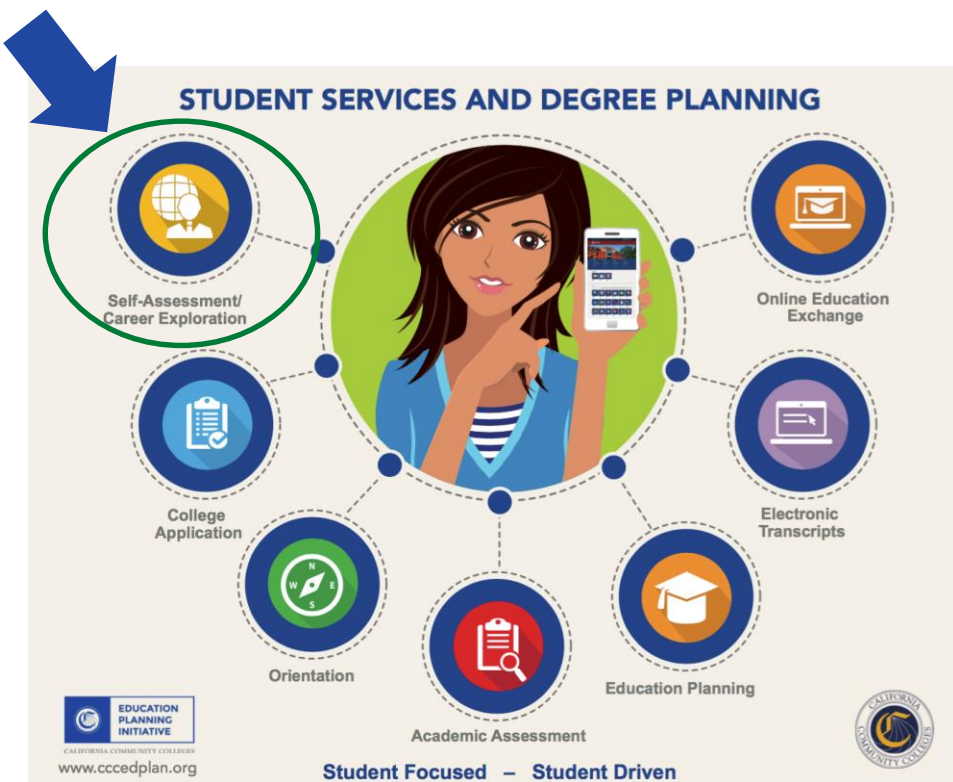


### Vince Veteran

Age 53- African-American Veteran

- Adult re-entry student
- Seeking Job Skills training
- Medical issues from injuries
- Undiagnosed disabilities
- Difficulty with technology

Self-Assessment  
&  
Career Exploration  
=  
Career Coach





# Background - Career Exploration Work Group

## Statewide Stakeholder Team:

- Career and General Counselors
- Staff - Admissions, IT
- Deans of Students
- Students

## Prioritized Requirements:

- Short Assessment
- Accessible – WCAG 2.0 AA Compliant
- Secure
- Mobile-friendly



# How do students decide? Video: <https://vimeo.com/174407736>

## OLD THINKING:





# Can we think better?

Flipping the College Decision Making Paradigm





# How can Career Coach help?

1. For students who have an idea of the career they want but don't know how to get there
2. For students who have a program of study in mind but don't know what it will lead to
3. For students who don't have a clue where to start



# Students have questions...

Who would I work for?

What should I study?

Am I prepared for that much schooling?

How much can I make?

What jobs can I get?

Will I like those jobs?

What should I do with my life?



# MyPath - Career Coach DEMO

[www.cccmypath.org](http://www.cccmypath.org)

Chancellor's Office open website for MyPath -- houses statewide Career Coach.  
Not specific to any one college and some capabilities may differ.



# Welcome to Career Coach

Discover majors and in-demand careers and education based on your interests!

## Take Career Assessment

Take a Career Assessment to learn about yourself and Career Coach will give you career suggestions based on your interests.

[Take the Assessment](#)

## Explore Careers

Browse careers and we will give you relevant data on wages, employment, and the training you need.

[Explore Careers](#)

## Explore Programs

Explore the available programs that lead to the career you want.

[Explore Programs](#)

## Have a military background?

Find your Military Occupation Code to find similar civilian careers. [Get Started](#)



# Assessment

Progress



Which assessment would you like to take?

6 question assessment

60 question assessment



# Assessment

Progress



Which assessment would you like to take?

6 question assessment

60 question assessment



# Assessment

Progress

## You would like to...

Work with your hands, build stuff, or fix things.

Strongly Disagree

Disagree

Unsure

Agree

Strongly Agree



# Assessment

Progress



## You would like to...

Explore, figure out how things work, solve problems.

Strongly Disagree

Disagree

Unsure

Agree

Strongly Agree



# Assessment

Progress



## You would like to...

Express your ideas through art, music, theater, film, or writing.

- [Strongly Disagree](#)
- [Disagree](#)
- [Unsure](#)
- [Agree](#)
- [Strongly Agree](#)



# Assessment

Progress



## You would like to...

Help people by advising, coaching, or teaching.

Strongly Disagree

Disagree

Unsure

Agree

Strongly Agree



# Assessment

Progress



## You would like to...

Persuade, convince, or influence people.

Strongly Disagree

Disagree

Unsure

Agree

Strongly Agree



# Assessment

Progress



## You would like to...

Plan activities, organize things, and manage lots of details.

Strongly Disagree

Disagree

Unsure

Agree

Strongly Agree



# Assessment

Progress



What level of education are you hoping to obtain?

A High School Diploma or Less

A Certificate

Some College

An Associate Degree

A Bachelor's Degree

A Master's or Professional Degree

A Doctoral Degree or More

Not Sure



# Assessment Results

## Your top three traits are . . .

### Realistic

Realistic people are attracted to outdoor, mechanical and physical activities, hobbies, and occupations. They like to work with things, objects, and animals rather than with ideas, data, and people. They tend to have mechanical and athletic abilities and are usually strong and well-coordinated.

### Investigative

Investigative people are naturally curious and inquisitive. They have a need to understand, explain, and predict the things that go on around them. They are scholarly and scientific in their attempts to understand things and tend to be pessimistic and critical when non-scientific, simplistic, or supernatural explanations are suggested by others.

### Conventional

Conventional people are well-organized, persistent, and practical in their approach to life. They enjoy clerical and computational activities performed according to set procedures. They are dependable, efficient, and conscientious in accomplishing the tasks in which they engage. They enjoy the security of belonging to groups and organizations and make good team members.

## Realistic

Realistic people are attracted to outdoor, mechanical and physical activities, hobbies, and occupations. They like to work with things, objects, and animals rather than with ideas, data, and people. They tend to have mechanical and athletic abilities and are usually strong and well-coordinated.

## Investigative

Investigative people are naturally curious and inquisitive. They have a need to understand, explain, and predict the things that go on around them. They are scholarly and scientific in their attempts to understand things and tend to be pessimistic and critical when non-scientific, simplistic, or supernatural explanations are suggested by others.

## Conventional

Conventional people are well-organized, persistent, and practical in their approach to life. They enjoy clerical and computational activities performed according to set procedures. They are dependable, efficient, and conscientious in accomplishing the tasks in which they engage. They enjoy the security of belonging to groups and organizations and make good team members.

Your top career matches are...

### > Science, Technology, Engineering and Mathematics

Planning, managing, and providing scientific research and professional and technical services (e.g., physical science, social science, engineering) including laboratory and testing services, and research and development services.



100% Match

### > Manufacturing

Planning, managing and performing the processing of materials into intermediate or final products and related professional and technical support activities such as production planning and control, maintenance and manufacturing/process engineering.



83% Match

## Realistic

Realistic people are attracted to outdoor, mechanical and physical activities, hobbies, and occupations. They like to work with things, objects, and animals rather than with ideas, data, and people. They tend to have mechanical and athletic abilities and are usually strong and well-coordinated.

## Investigative

Investigative people are naturally curious and inquisitive. They have a need to understand, explain, and predict the things that go on around them. They are scholarly and scientific in their attempts to understand things and tend to be pessimistic and critical when non-scientific, simplistic, or supernatural explanations are suggested by others.

## Conventional

Conventional people are well-organized, persistent, and practical in their approach to life. They enjoy clerical and computational activities performed according to set procedures. They are dependable, efficient, and conscientious in accomplishing the tasks in which they engage. They enjoy the security of belonging to groups and organizations and make good team members.

Your top career matches are...

### ✓ Science, Technology, Engineering and Mathematics

Planning, managing, and providing scientific research and professional and technical services (e.g., physical science, social science, engineering) including laboratory and testing services, and research and development services.



**Electrical and Electronic Engineering**

**100%** Match



**Mechanical Engineering**

**98%** Match



**Chemical and Material Engineering**

**98%** Match





## Electrical Engineering Technologists

Assist electrical engineers in such activities as process control, electrical power distribution, or instrumentation design. May prepare layouts of electrical transmission or distribution systems, supervise the flow of work, estimate project...



**\$67,464**

Annual Wage



**A Bachelor's Degree**

Typical Education



## Electrical Engineering Technicians

Test or modify developmental or operational electrical machinery or electrical control equipment and circuitry in industrial or commercial plants or laboratories. Usually work under direction of engineers or technologists.



**\$65,124**

Annual Wage



**A Certificate**

Typical Education



## Electronics Engineering Technicians

Lay out, build, test, troubleshoot, repair, and modify developmental and production electronic components, parts, equipment, and systems, such as computer equipment, missile control instrumentation, electron tubes, test equipment, and...



**\$65,124**

Annual Wage



**An Associate Degree**

Typical Education



# Electronics Engineering Technicians

[Overview](#)[About](#)[Wages](#)[Employment](#)

## \$65,124

Median Salary

New workers start around \$40,246. Normal pay is \$65,124 per year. Highly experienced workers can earn up to \$97,733.

## 5,740

Job postings in the last six months

In the last six months companies have posted 5,740 jobs for this career.



### Selected Region



California



### Notice!

The Bureau of Labor Statistics does not report growth and retirement data granular enough to pinpoint career specializations like Electronics Engineering Technicians. Data from the "parent" classification - Electrical and Electronics Engineering Technicians - has been substituted. As a result, this pay data does not reflect any special compensation that an Electronics Engineering Technicians might receive.

Available Programs



# Electronics Engineering Technicians

[Overview](#)

[About](#)

[Wages](#)

[Employment](#)

## Daily Tasks

- Read blueprints, wiring diagrams, schematic drawings, or engineering instructions for assembling electronics units, applying knowledge of electronic theory and components.
- Identify and resolve equipment malfunctions, working with manufacturers or field representatives as necessary to procure replacement parts.
- Test electronics units, using standard test equipment, and analyze results to evaluate performance and determine need for adjustment.
- Assemble, test, or maintain circuitry or electronic components, according to engineering instructions, technical manuals, or knowledge of electronics, using hand or power tools.
- Adjust or replace defective or improperly functioning circuitry or electronics components, using hand tools or soldering iron.

[More](#)



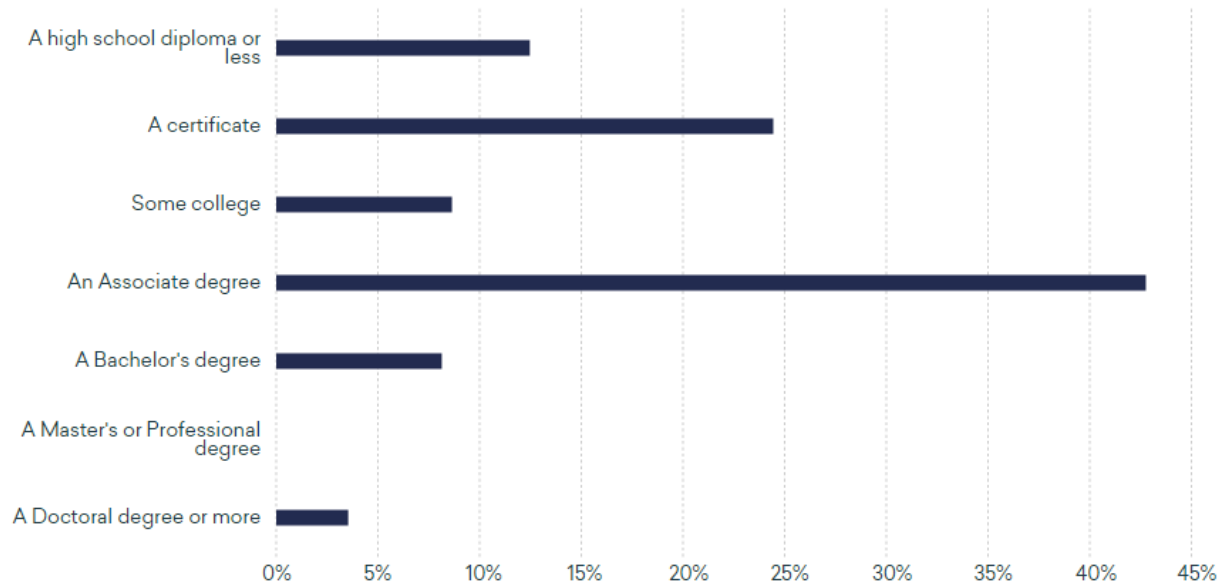
## Selected Region





## Education Attainment Level

The following shows the percentage of Electronics Engineering Technicians that have achieved different levels of education. This is not meant to represent what you should pursue, but rather to inform what other workers in the field have attained.

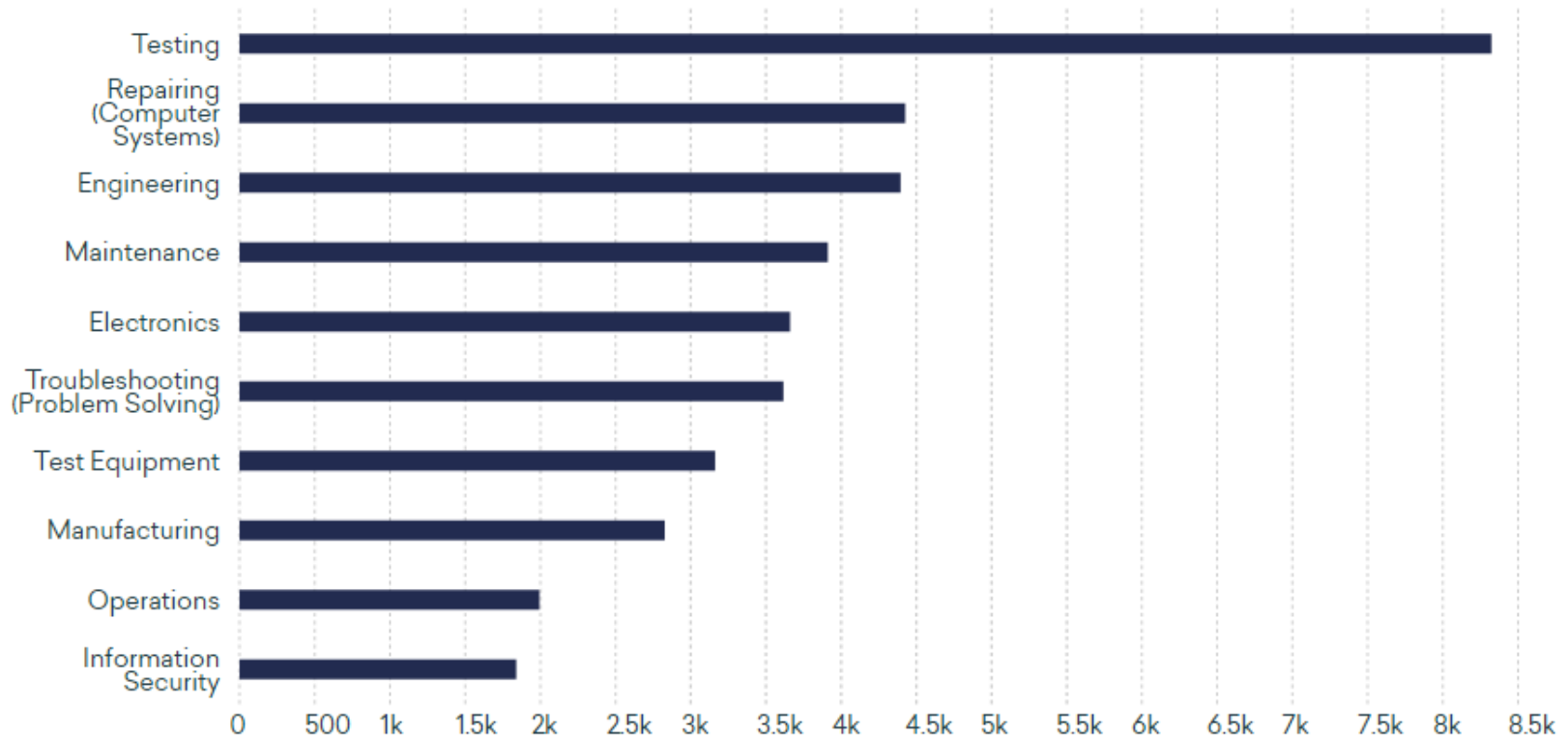


*Educational Attainment is a national breakdown of the education levels attained by the occupation's workforce.*

California



## Skills employers are asking for





# Electronics Engineering Technicians

Overview

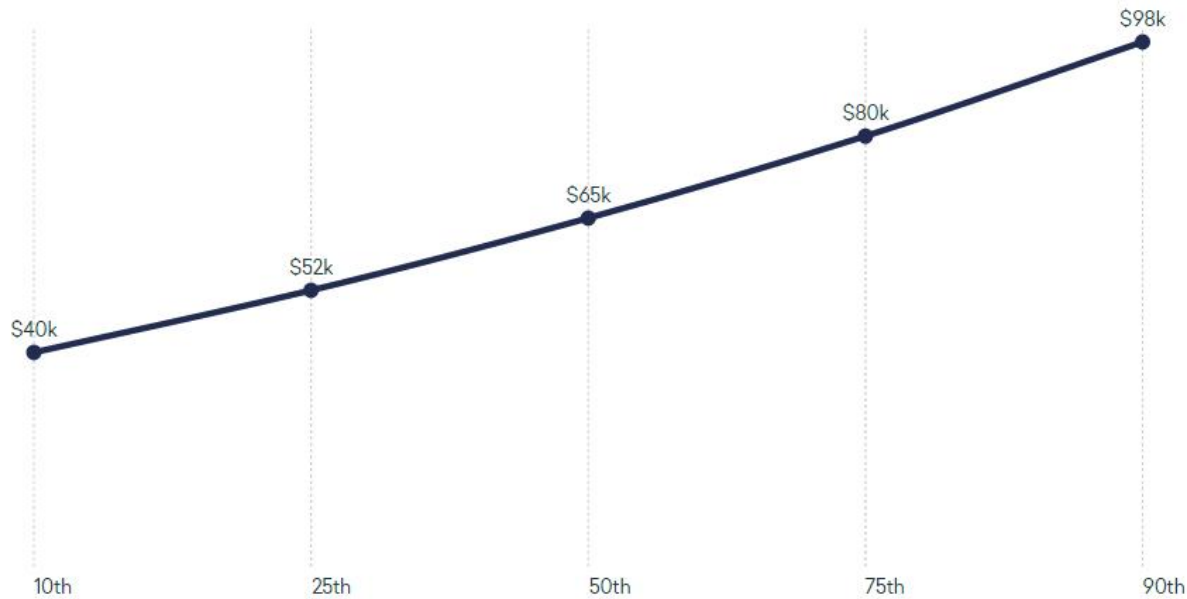
About

Wages

Employment

## Wages

New workers generally start around \$40,246. Normal pay for Electronics Engineering Technicians is \$65,124 per year, while highly experienced workers can earn as much as \$97,733.



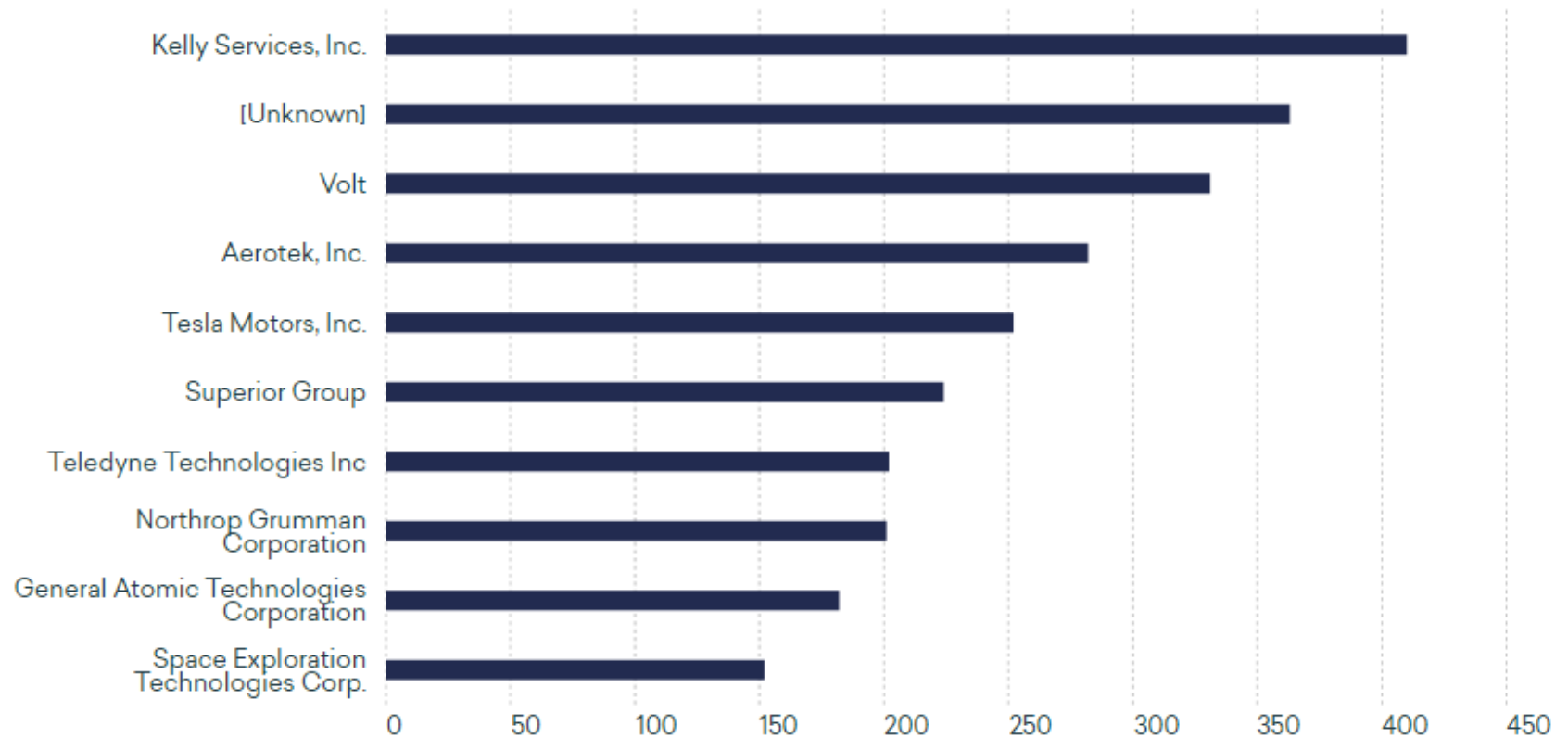
## Selected Region



California

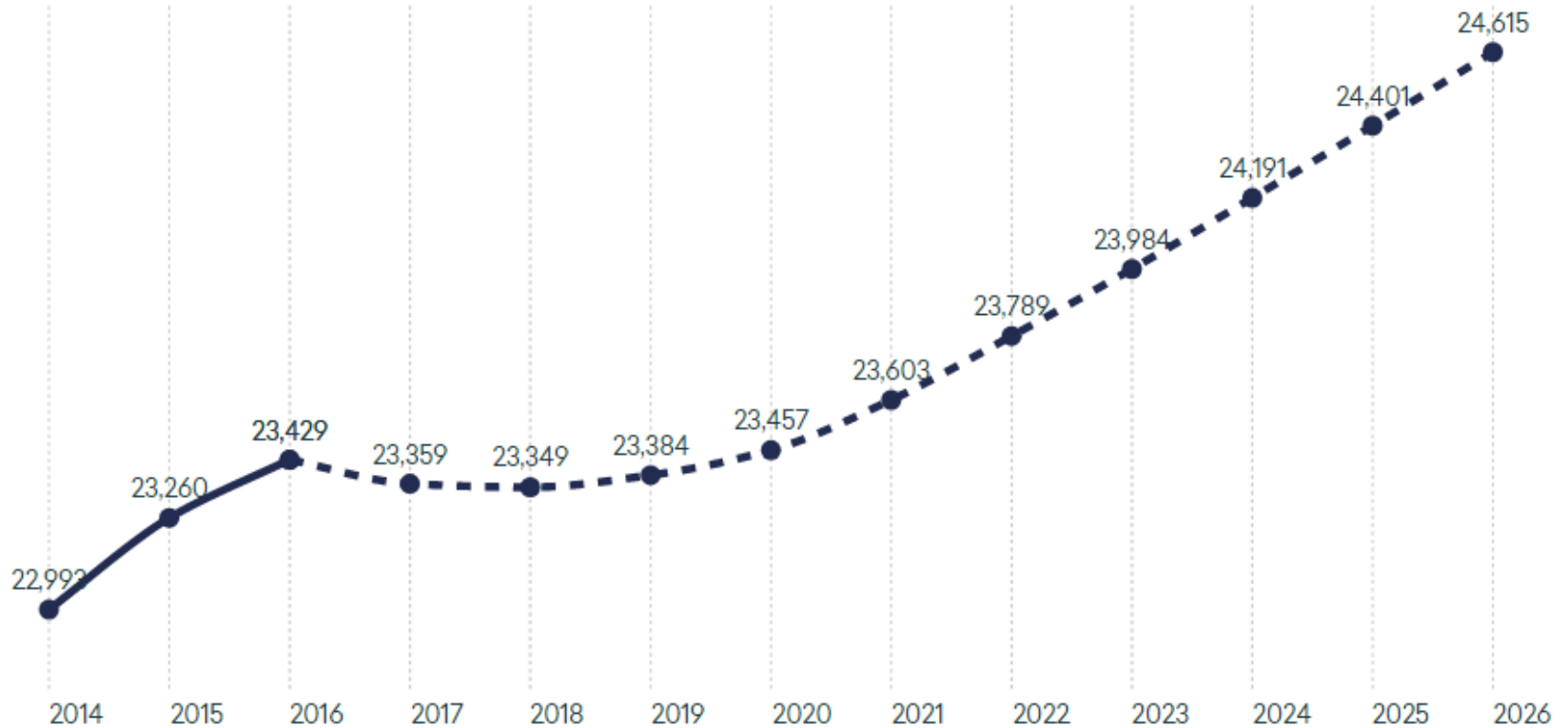


## Companies posting jobs



## Employment Projection

There are currently 23,429 Electronics Engineering Technicians that are employed in California.







# Search

electro

Careers

Military

Programs

## Electronic Engineering Technology

AS Degree

Below are institutions that provide this program.

**City College of San Francisco**

## Film, Television, And Electronic Media

AS-T Degree

Below are institutions that provide this program.

**City College of San Francisco**

**College of San Mateo**

## **Electronics Computer Systems**

Certificate of Achievement

Below are institutions that provide this program.

**Norco College**

**Riverside City College**

## **Electronics Computer Systems**

AS Degree

Below are institutions that provide this program.

**Norco College**

**Riverside City College**

## **Electronics: Computer Technician**

Certificate of Achievement

Below are institutions that provide this program.

**Southwestern College**

# Search


Air Force

Careers Military Programs

## General and Operations Managers

Plan, direct, or coordinate the operations of public or private sector organizations. Duties and responsibilities include formulating policies, managing daily operations, and planning the use of materials and human resources, but are too diverse and general in nature to be classified in any one functional area of management or...

 **\$133,385**  
Annual Wage


 **A Bachelor's Degree**  
Typical Education



## Aerospace Engineering and Operations Technicians

Operate, install, calibrate, and maintain integrated computer/communications systems, consoles, simulators, and other data acquisition, test, and measurement instruments and equipment, which are used to launch, track, position, and evaluate air and space vehicles. May record and interpret test data.

 **\$74,797**  
Annual Wage

 **A Master's or Professional Degree**  
Typical Education



## Electronics Engineering Technicians

Lay out, build, test, troubleshoot, repair, and modify developmental and production electronic components,





# Who is Emsi?



- **Partnerships & experience working with colleges in US, Canada & UK**
- **268 institutions have Career Coach in the US**
- **Decision-makers in higher education use & trust Emsi data**
- **Emsi works through tools or services with almost all CCCs**
- **1.1 million students used Career Coach in 2016**
- **Career Coach data is updated quarterly, with postings updated monthly (<http://www.economicmodeling.com/data/>)**



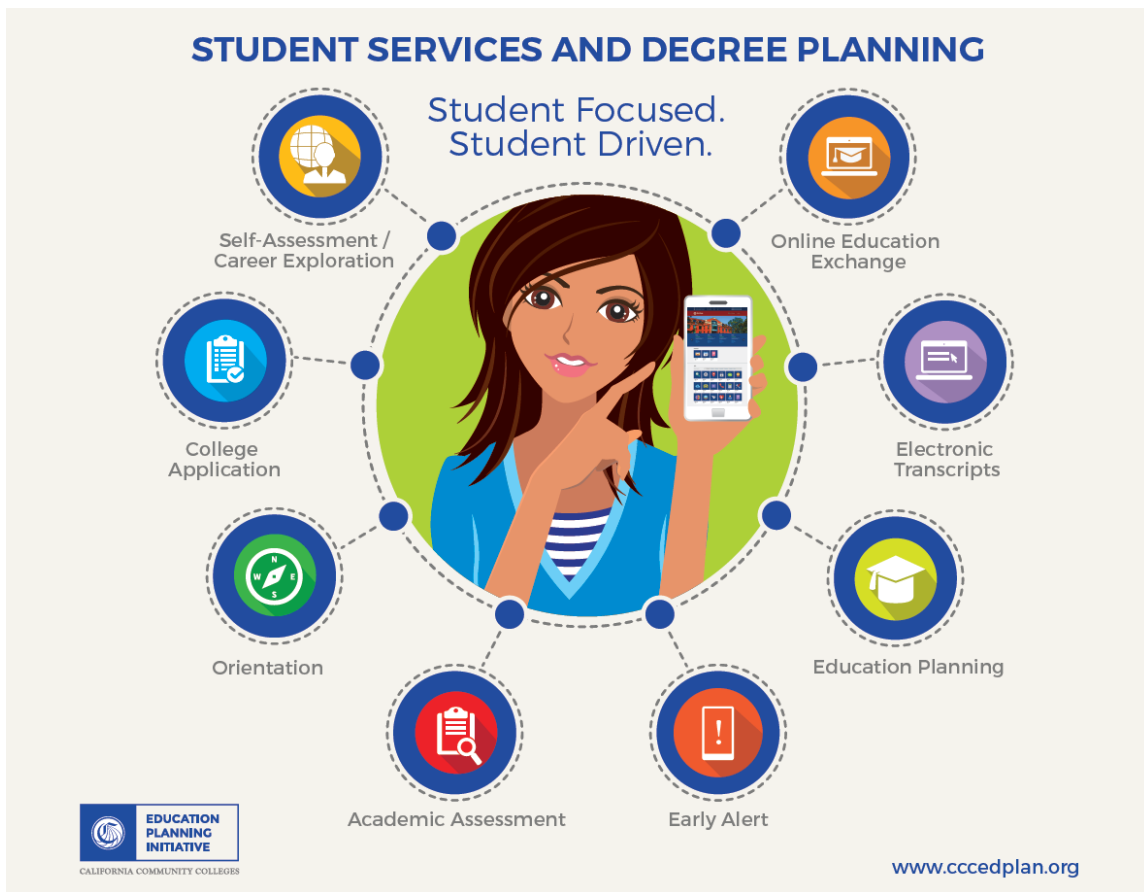
# MyPath

- **Product Overview – What is MyPath?**
- **College Use Case: Santa Rosa Junior College**
- **Career Exploration: Career Coach**
- **Additional Features (Content pages, rules, communications)**
- **Current Status**



# What is MyPath?

- **Statewide Student Services Portal**
- **Tools that colleges can use to help guide students through the matriculation process**
- **Fully customizable for each school, including messaging to different populations**





## The Role of MyPath

**MyPath has three major objectives that it fulfills for three separate constituencies:**

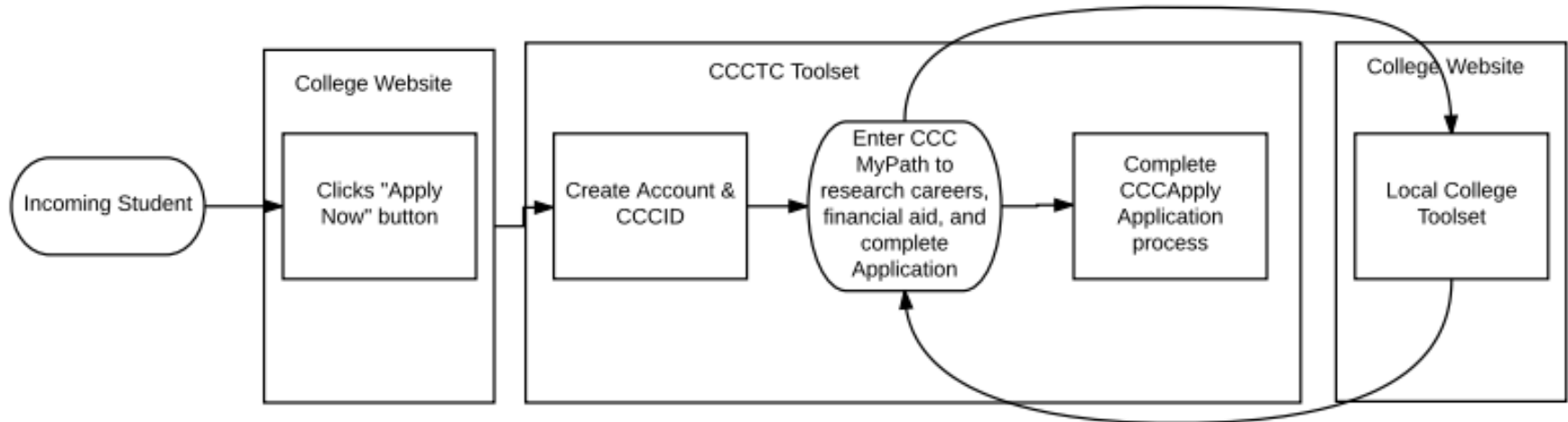
- 1. Prospective CCC student workflow**
- 2. Supplemental college portal**
- 3. Can contain your additional apps - Cross-project services provider**



## How does a student use MyPath?



**Faith Freshman is an incoming student with great grades and extracurriculars who isn't sure what she wants to do post-college.**







# SANTA ROSA JUNIOR COLLEGE

*Building on a Legacy of Excellence*



## Steps for New Students

Learn about the 5 steps for all new SRJC students

- [Step 1: Apply](#)
- [Step 2: Assessment](#)
- [Step 3: Orientation](#)
- [See all...](#)

## Financial Aid Info

Financial Aid can help you pay for college.

- [Step One - Apply](#)
- [Step Two - Review](#)
- [Step Three - Follow up](#)
- [See all...](#)

## Register for Classes

Finished the steps? Time to register!

- [Register for classes](#)

## Online Learning

Find online classes and become a successful online learner.

- [Canvas Login](#)
- [Find online courses](#)
- [Learn Canvas](#)
- [See all...](#)





## 1. Explore Careers

Find a career that motivates you.

- [Take the Career Assessment](#)
- [Explore Careers](#)
- [View Potential Wages](#)

## 2. Choose a College

Discover a college that will help you reach your goals.

- [About the Community Colleges](#)
- [Find a College](#)
- [All Community Colleges](#)
- [See all...](#)

## 3. Apply for College

Get your application started and learn about priority registration.

- [Begin Application](#)
- [What is Priority Registration?](#)
- [Orientation](#)
- [See all...](#)

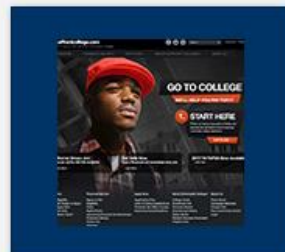
## 4. Pay for College

Apply for financial aid.

- [Eligibility](#)
- [Get Ready to Apply](#)
- [Apply Now](#)
- [See all...](#)



## Apps



[Financial Aid](#)



[Priority Registration](#)



[CSU and UC Transfer](#)



# MyPath at Santa Rosa College

- **How it's being used**
- **Usage statistics as of 4/5/17**
  - **7,210 student logins**
  - **2,324 advisor cards completed**
- **IT perspective: what went well, what was a learning experience**
- **Really Like: Configurable Adviser Cards**





## **MyPath Product Suite Snapshot: Online Orientation:**

- **Provides a template with base content**
- **Content addresses Title V and student success regulations**
- **Customizable to meet individual college/district needs**
- **Tool can be utilized to implement various orientation models**
- **Available at no cost**
- **May be utilized to meet individual college and/or district needs**
  - **Santa Rosa and State Center District**



# MyPath Product Suite Snapshot: Financial Aid:

The screenshot shows a web browser window displaying the MyPath website. The URL is <https://portal.pilot.cccmypath.org/uPortal/p/types-of-financial-aid/max/render.u?p?advisorCardId=9163&advisorCardTask=2>. The page title is "Types of Financial Aid". The content includes a list of financial aid options:

- Board of Governors (BOG) Fee Waiver** - For eligible California residents, the California Community Colleges Board of Governors (BOG) Fee Waiver permits enrollment fees to be waived. (Assistance for the purchase of books and supplies must be applied for separately.)  
Many California community colleges offer online BOG Fee Waiver applications through CCCApply.  
For more information go to: [I Can Afford College BOG Waivers](#)
- Federal Grants** - Federal grants, like Pell Grants or Federal Supplemental Educational Opportunity Grants, are awarded based on financial need, not grades or class rank. Chafee Grants are available if you are or were in foster care between the ages of 16 and 18, and are attending or planning to attend a California community college. There are a limited number available, so apply early.  
For more information go to: [I Can Afford College Federal Grants](#)
- Cal Grants** - Cal Grants are funded by the State of California and are available to California community college students who meet academic, financial and eligibility requirements.  
To apply for a Cal Grant, students need to submit both the FAFSA or CADAAnd a verified Cal Grant GPA by the deadline. The most important Cal Grant deadline is March 2 every year, when you can apply for both the Entitlement and Competitive awards. Applying by this deadline will maximize the amount of aid you can receive. However, for FAFSA filers, if you miss this deadline, community college students have another chance to apply. September 2 is the final deadline for Cal Grant Competitive awards, but these are extremely limited. CADA filers are ineligible for any of the Cal Grant competitive awards.  
For more information go to: [I Can Afford College Cal Grants](#)
- Scholarships** - For more information go to:
- Student Loans** - Federal Student Loans and Other Programs  
For more information go to: [Federal Student Loans and Other Programs video](#)
- Work Study**

At the bottom of the page, there is a footer with the California Community Colleges Chancellor's Office logo and copyright information: "Copyright © 2016 by California Community Colleges Chancellor's Office. Terms Of Use Privacy Policy Accessibility".

- **Drawn from / Can Afford College and input from subject matter experts**
- **Includes a call to action: Apply now!**
- **Easily customized**



CCC Student Services Por x

Secure | <https://portal.pilot.cccmypath.org/uPortal/p/education-plan-ccctc/max/render.uP?advisorCardId=9158&advisorCardTask=3>



Enter search terms



CCCTC DEMO COLLEGE

CCC RECOMMENDS 3

MESSAGES 0

SETTINGS

HELP



## CCCTC Demo College

[Back](#) [EOPS](#) [Campus Life](#)

### Education Plan: Make the most of your college experience



Learn more about priority registration: [Peter's Story](#)

One of the most important steps you take as a college student is setting career and educational goals.

Your Education Plan, created with the help of a counselor, is a step-by-step guide to meet your career and educational goals. Planning ahead will ensure you take your courses when you need them. Students with an Education Plan are that much closer to earning priority registration.

#### Identifying a Career Goal Helps Select Your Major

Choosing a career goal can be key to successful educational planning. Once you decide on a career goal you will be able to research the appropriate major and educational requirements.

If you are undecided about your career goal, taking a career planning course is a wise choice. Career planning courses can help you learn more about yourself as well as provide opportunities for you to explore careers that are compatible with who you are as an individual. Seeking the guidance of a counselor early is also a good idea. Counselors can help you make decisions about your goals or discuss the decisions you have already made and ensure that you take the right classes in the right order to achieve those goals.

You may not have time to fully explore these websites during your orientation, but take note of them so that you can access them later:

- [Career Coach](#)
- [Who Do U Want 2 B? \(External website - you are leaving MyPath\)](#)

#### Identifying a Major Helps Define Your Educational Goal

Some students know their major before they know what specific career they are interested in. Other students decide their career first and then learn what the best major is for that career choice. No matter what category you fall into choosing your major early will help you progress towards your goals much more efficiently and cost-effectively.

#### Identifying an Educational Goal Helps You Save Money

Initially, your educational goal may just to enroll in classes that you think you will enjoy or those that interest you. Some students want to take just a few classes to



## MyPath Product Suite Snapshot:

- **Communications:** MyPath can send email, text, UI messages
- **Rules Engine:** MyPath can do things based on student data, such as add a checklist item, show a content page, or generate a notification
- **Reporting:** The system includes reporting tools to help colleges understand student usage individually and in aggregate
- **Integrations:** Next phase will be to tie data from MyPath and include other projects so you know across multiple projects what your students are using.



## Current Status of MyPath

- **The product is currently available for adoption by all California Community Colleges**
- **If a college is interested in MyPath, our implementation team is ready to assist your adoption**
- **MyPath has live colleges and more are currently implementing**





# Summary

- **The MyPath suite of tools, including Career Coach, has been designed explicitly to promote student success**
- **Through MyPath - Career Coach:**
  - **Students will be able to explore regional occupational data**
  - **Students will be able to see their interests connected to careers, to programs, then those programs at specific colleges**
  - **Students will be assisted through direction on their path to get the education they need to see their future career**
- **MyPath is available now**

# Thank You!

- Join the conversation:  
[CCCEdPlan.org](http://CCCEdPlan.org)
- Want to be involved?  
[epi@ccctechcenter.org](mailto:epi@ccctechcenter.org)
- User Community Support - Get Satisfaction

## QUESTIONS?

The screenshot shows the MyPath website interface. At the top, there is a blue navigation bar with the MyPath logo, a search bar, and links for 'CCCTC DEMO COLLEGE', 'CCC RECOMMENDS' (with a '3' notification), 'MESSAGES' (with a '0' notification), 'LOGOUT', and 'HELP'. Below the navigation bar is the CCCTC Demo College logo and name. A large banner image shows a group of six diverse students smiling in front of a brick building. Below the banner are four main content sections: 'Explore Careers', 'Apply to College', 'Priority Registration', and 'Paying for College'. Each section has a brief description and a list of links. The 'Explore Careers' section includes links like 'Watch this FIRST!', 'What careers fit me?', and 'What training/education do I need?'. The 'Apply to College' section has a link for 'Start your application'. The 'Priority Registration' section has links for 'Online Orientation' and 'Transfer Requirements'. The 'Paying for College' section has links for 'Financial Aid Info' and 'Do I qualify for aid?'. Navigation arrows are visible on the left and right sides of the content area.

# Thank you

530.517.5EPI (517.5374)

[epi@ccctechcenter.org](mailto:epi@ccctechcenter.org)

**CCCEdPlan.org**

**User Community:**

[https://www.ccctechnology.info/ccctc/categories/ccctc\\_career\\_coach](https://www.ccctechnology.info/ccctc/categories/ccctc_career_coach)