

State of the Senate Fall Plenary 2013

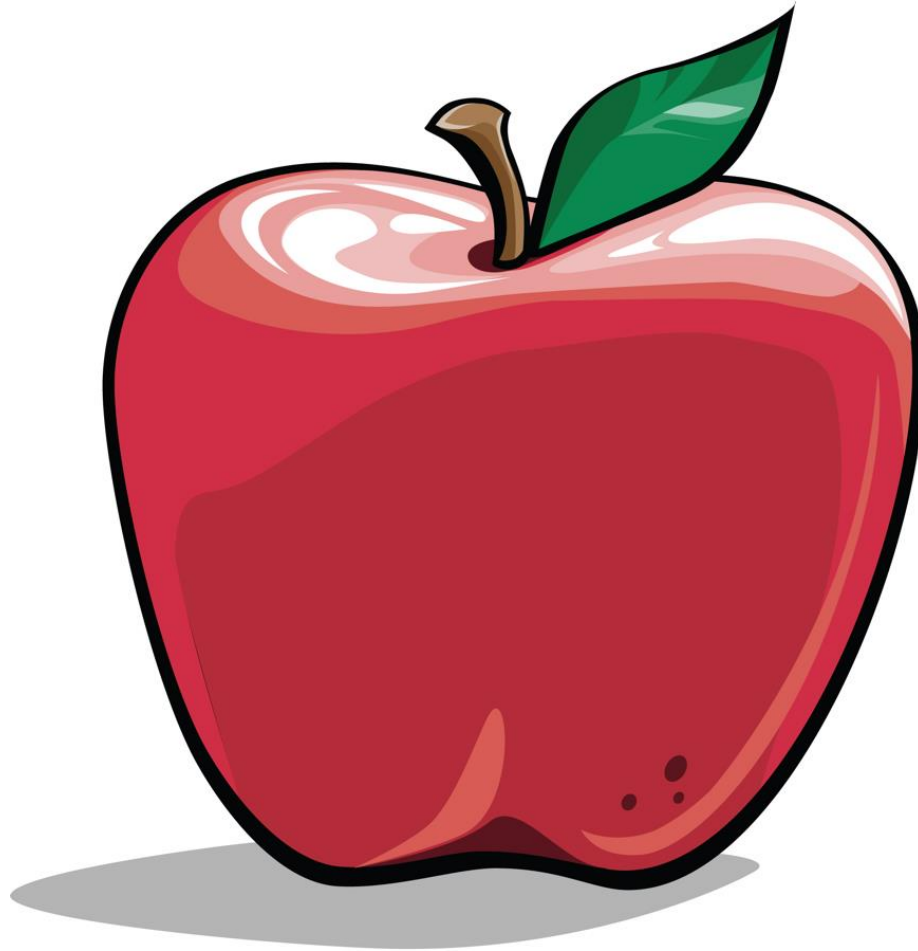
Beth Smith

President, ASCCC



LEADERSHIP. EMPOWERMENT. VOICE.

Best Faculty in California!

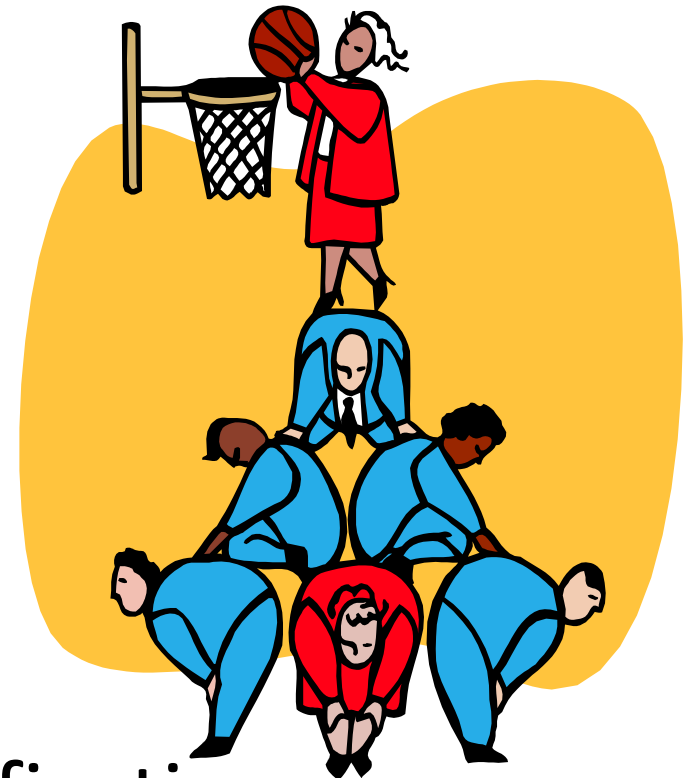


State of the Senate

- **Excellent Executive Committee**
- **Improved budget (+\$150,000)**
- **Modified Organizational Structure**
- **Expanded Partnerships**
- **Increased Diversity on Committees and Task Forces**
- **Strategic Planning – Surveys**

Accomplishments

- Senate recognition by SDICCCA
- 1000's of curriculum modifications
- Policy, procedure, process development and implementation
- New facilities and new faculty



Court Decision On Collegial Consultation



Student Enrollment

	2010-11	2011-12	2012-13
Number of Students	2.6 million	2.4 million	2.29 million

Degrees Awarded

	2010-11	2011-12	2012-13
AA and AS	85,000	89,000	91,000

Degrees Awarded

	2010-11	2011-12	2012-13
AA and AS	85,000	89,000	91,000
AA-T and AS-T	0	800	5,300

Degrees Awarded

	2010-11	2011-12	2012-13
AA and AS	85,000	89,000	91,000
AA-T and AS-T	0	800	5,300
Total	85,000	89,800	96,300

Numbers of certificates
awarded also increasing

CTE Student Survey

- 47,436 CTE “completer” students surveyed
- 11,595 (24%) students responded to the survey
- Hourly wage increased 28% --- from \$18.34 to \$23.51

Data from CTE Employment Outcomes Survey 2013

More from CTEEOS

Respondents were asked why they stopped taking classes at CCCs. Here are the most frequently cited reasons in order of frequency:

- I completed the program (4400)
- My goals were met (4205)
- Transferred to another school (2522)
- Got a job (1867)
- I didn't have time for classes (1117)
- Classes I needed weren't available (1081)
- Family or personal reasons (948)

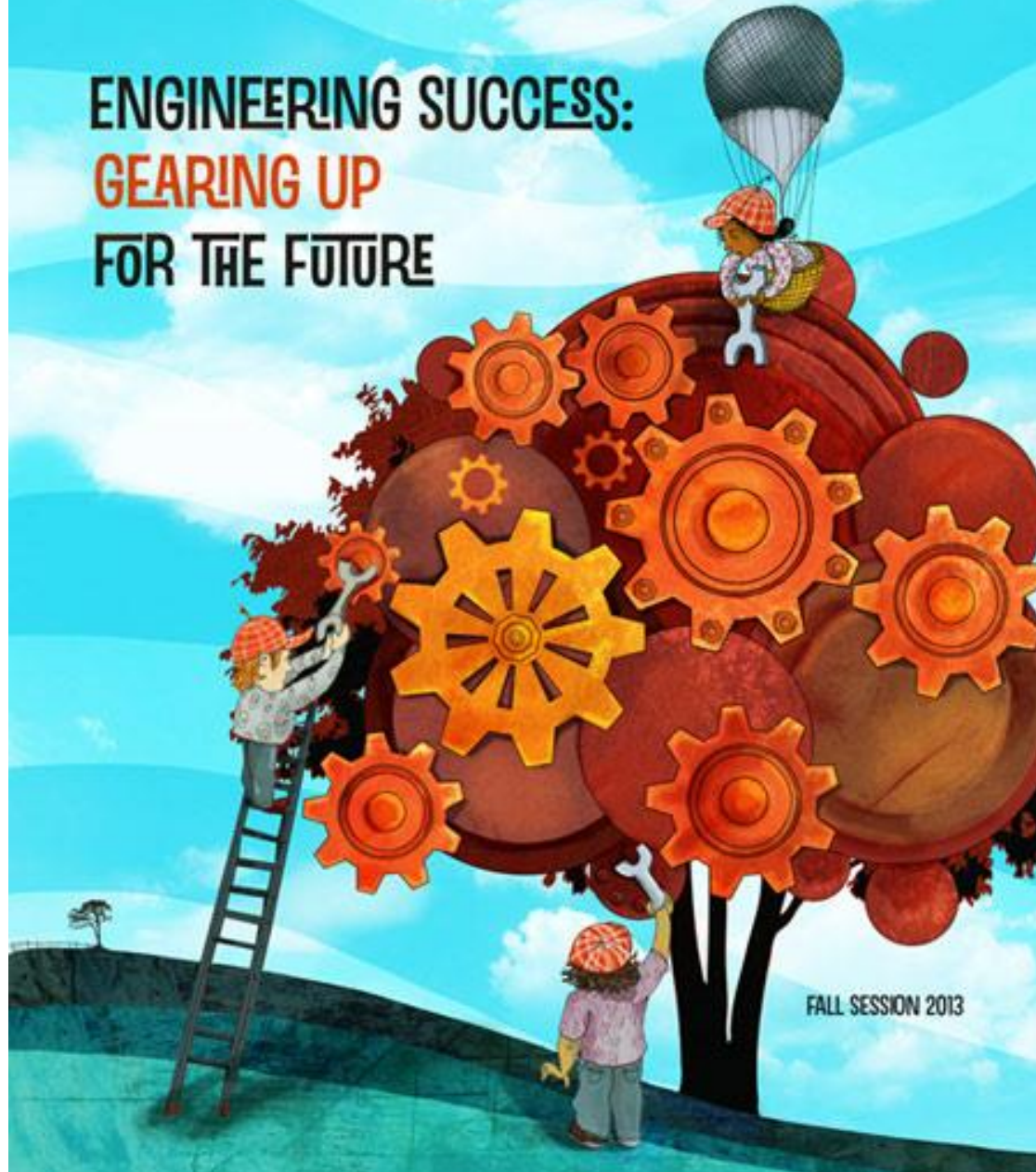
More from CTEEOS

Respondents were asked why they stopped taking classes at CCCs. Here are the most frequently cited reasons in order of frequency:

- I completed the program (4400)
- My goals were met (4205)
- Transferred to another school (2522)
- Got a job (1867)
- I didn't have time for classes (1117)
- Classes I needed weren't available (1081)
- Family or personal reasons (948)

ACADEMIC SENATE FOR CALIFORNIA COMMUNITY COLLEGES

ENGINEERING SUCCESS: GEARING UP FOR THE FUTURE



FALL SESSION 2013

Intentionality

Deliberate

Purposeful

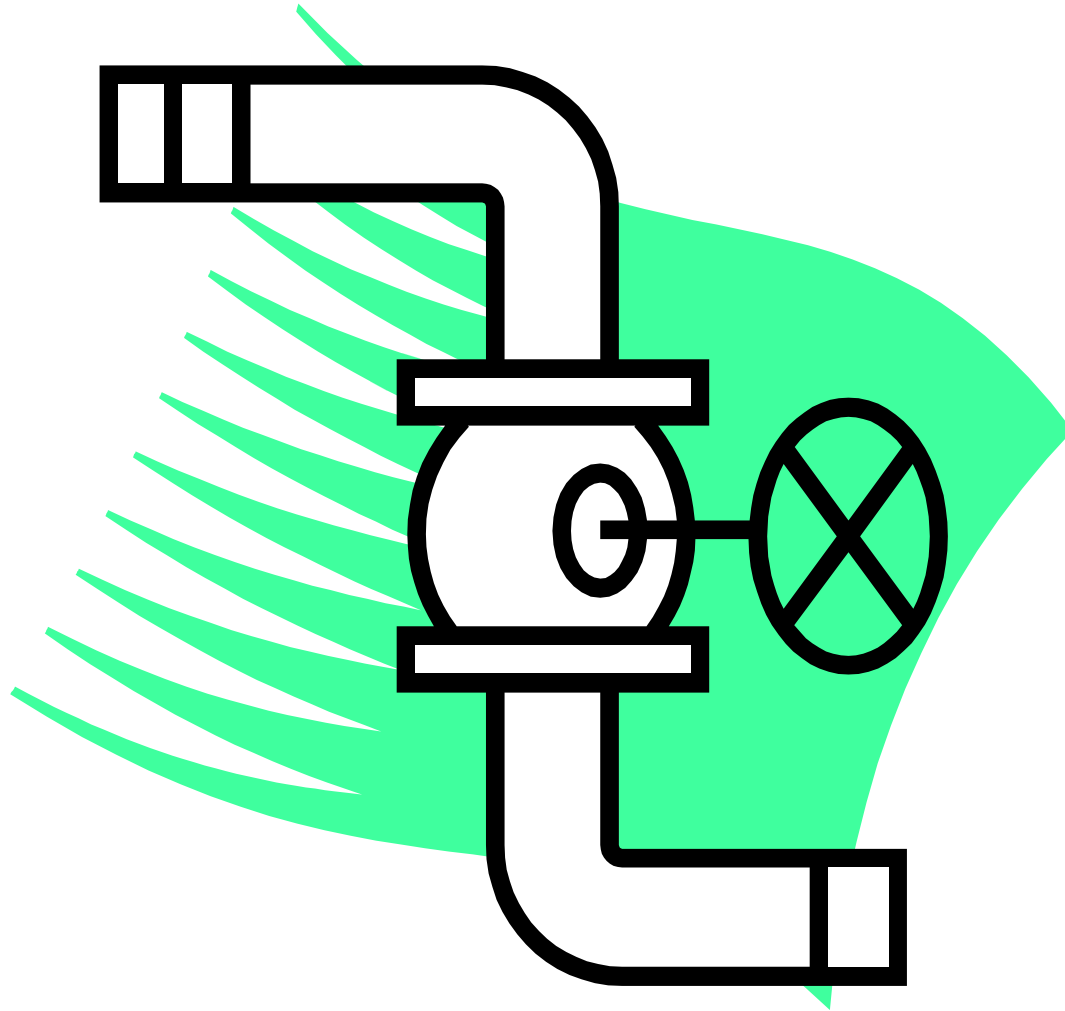
DESIGN

Engineer

PLAN

Anticipate

Mission



GE

Business leaders (namely IBM and Proctor and Gamble chiefs) say students of the liberal arts “bring to a workplace ...creativity, problem solving, flexibility, and teamwork,” where “you get to exercise your whole brain.”

College (Un)Bound, Jeffrey Selingo, 2013

GE

“ ...college graduates need a deep skill in some academic subject, but that depth in one area needs to be supplemented with other knowledge.”

College (Un)Bound, Jeffrey Selingo, 2013

Application for Statewide Service

<http://www.asccc.org/content/application-statewide-service>

The Senate appoints faculty to committees, task forces, and other assignments all during the year.

Events

- Curriculum Regionals - next week
- Accreditation Institute – partnering with CCLC and ACCJC – February, San Diego
- Academic Academy on GE – February, Napa
- Leadership Institute – June, San Diego
- Curriculum Institute – July, TBD



THANK YOU

Julie, Holly, Tonya, Lashonda, and all the staff!

info@asccc.org

info@asccc.org

info@asccc.org info@asccc.org

info@asccc.org info@asccc.org

info@asccc.org INFO@ASCC.CC.ORG

info@asccc.org info@asccc.org

info@asccc.org info@asccc.org

info@asccc.org info@asccc.org

info@asccc.org info@asccc.org info@asccc.org

INFO@ASCC.CC.ORG info@asccc.org

info@asccc.org