

Community College Performance Standards

Trustee's Role in in Setting Standards for Student Achievement.

Adrienne Foster, Los Angeles CCD

William G. McGinnis,

Butte-Glenn CCD

Presentation Outline

- The Mandated Data & Definitions
- Data Presentations Samples
- The Trustees' Role & Responsibilities
- “What if” Discussion
- Conclusion

Student Achievement Mandate

- Community Colleges shall establish standards for student achievement (**ACCJC requirement**)
- A standard is a level of performance that an institution determines it must meet. (**Not a goal**)
- Should an institution not meet an adopted standard it must engage in high level institutional introspection.

The Student Achievement Standards

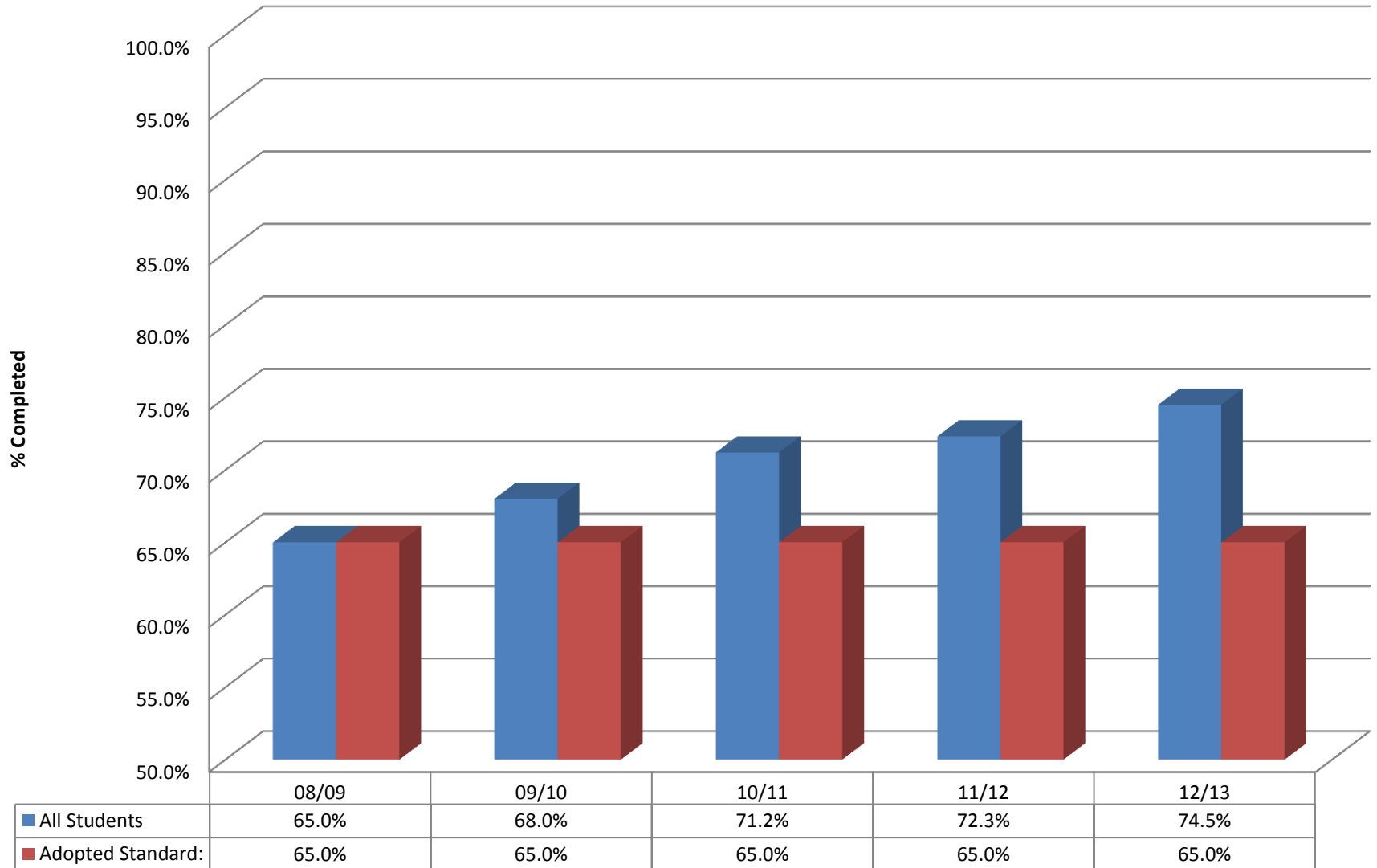
- Student Course Completion Rates (%)
- Student Retention Rate (%)
- Student Degree Completion #
- Student Transfer to 4 yr college/university #
- Student Certificate Completion #
- *Gainful Employment Data (USDE Proposal)*

Student Course Completion Rates (%)

- The completion rate is calculated by dividing the number of students satisfactorily completing (with a grade of “C” or better) all courses by number of students attempting all the courses.
- Significance – demonstrates ability of students to satisfactorily progress – predictor of graduation.
- This data is computed by the District’s institutional research staff for each college.

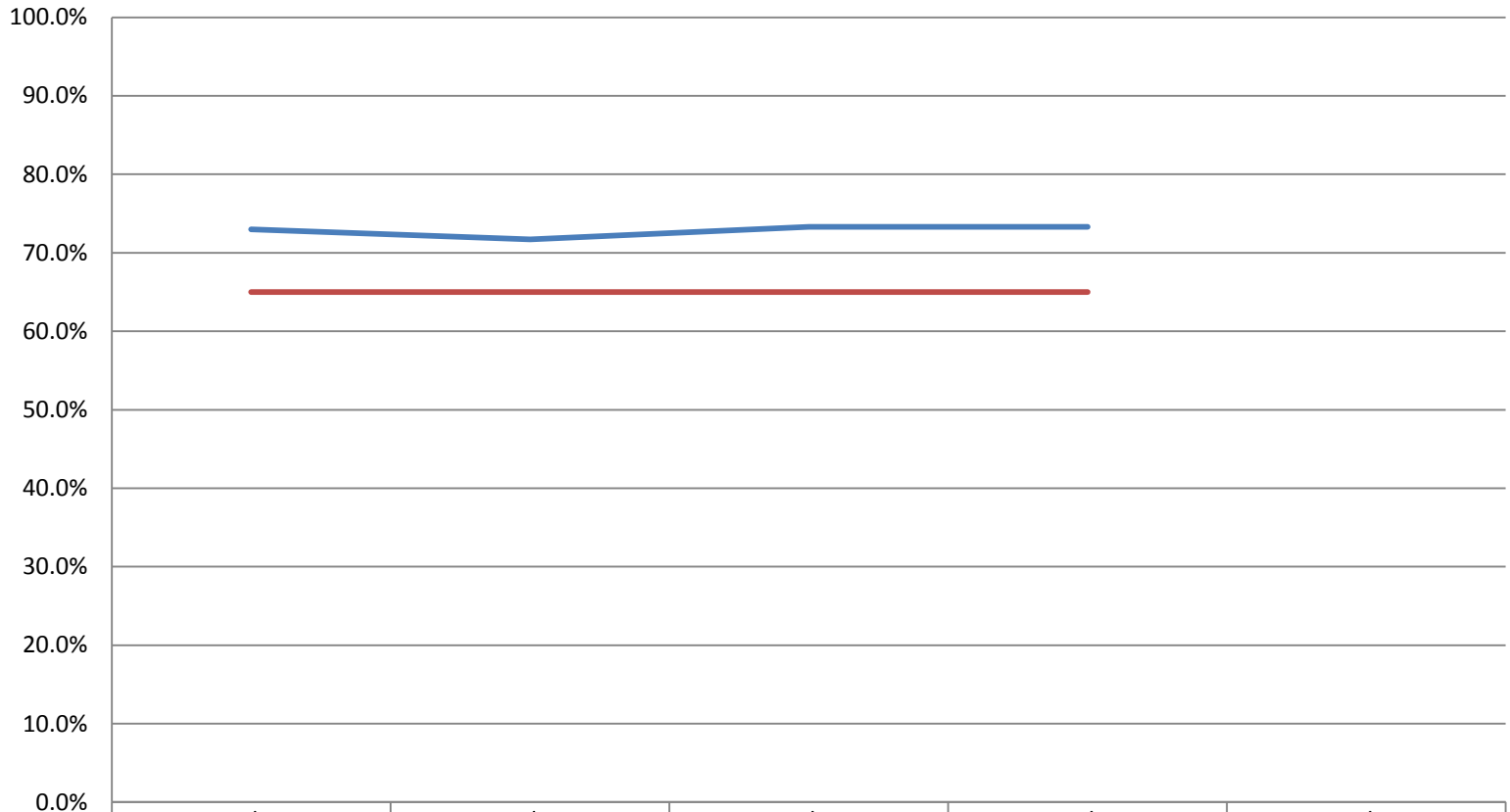
ABC Community College

All Students - Course Completion Rate



EFG College

Student Completion Rates



Percentage

Course completion rate

Standard

08/09

09/10

10/11

11/12

12/13

73.0%

71.7%

73.3%

73.3%

65.0%

65.0%

65.0%

65.0%

College Benchmarks and Goals

	2011/2012	2012/2013	Met Benchmark	Benchmark/Standard for ACCJC	Inspirational Goal
1. Successful course completion rate (%)	70%	70%	✓	70%	72%
2. Fall-to-fall persistence rate (%)	37%	40%	✓	37%	40%
3. Degree completion (total #)	319	342	✓	300	330
4. Transfer (total #)	237	Not available		275	300
4.a. UC/CSU Transfer #	158	169	✓	165	170
5. Certificate completion (total #)	280	337	✓	280	300
6. Licensure Pass Rate: Radiological Technology—National Exam	100%	100%	✓	100%	100%
7. Job Placement	NA	NA		NA	NA
8. Fall-to-spring persistence rate (%)	59%	61%	✓	59%	62%
9. Student success rates during their first year*	66%	65%		66%	68%
10. Success in GE	69%	70%		71%	73%
11. Success in DE	53%	63%	✓	53%	56%
12. Success in CTE	79%	77%		80%	82%
13. Success in Pre-transfer	57%	58%	✓	57%	59%
14. Success in Non-CBET ESL	63%	66%	✓	65%	67%
15. % of students placed in pre-transfer math that take pre-transfer math	48%	43%		65%	70%
16. % of students placed in pre-transfer English that take pre-transfer English	40%	34%		55%	65%
17. % of students place in pre-transfer reading that take pre-transfer reading	32%	26%		50%	55%
18. FTES (Total #)	4420	4402		4500	5000
19. LOAD (Year)	499	504		525	550

- 1 through 7 are required by ACCJC and US Department of Education.
- Green indicates making positive progress from previous year.
- ✓ indicates meeting the benchmark.

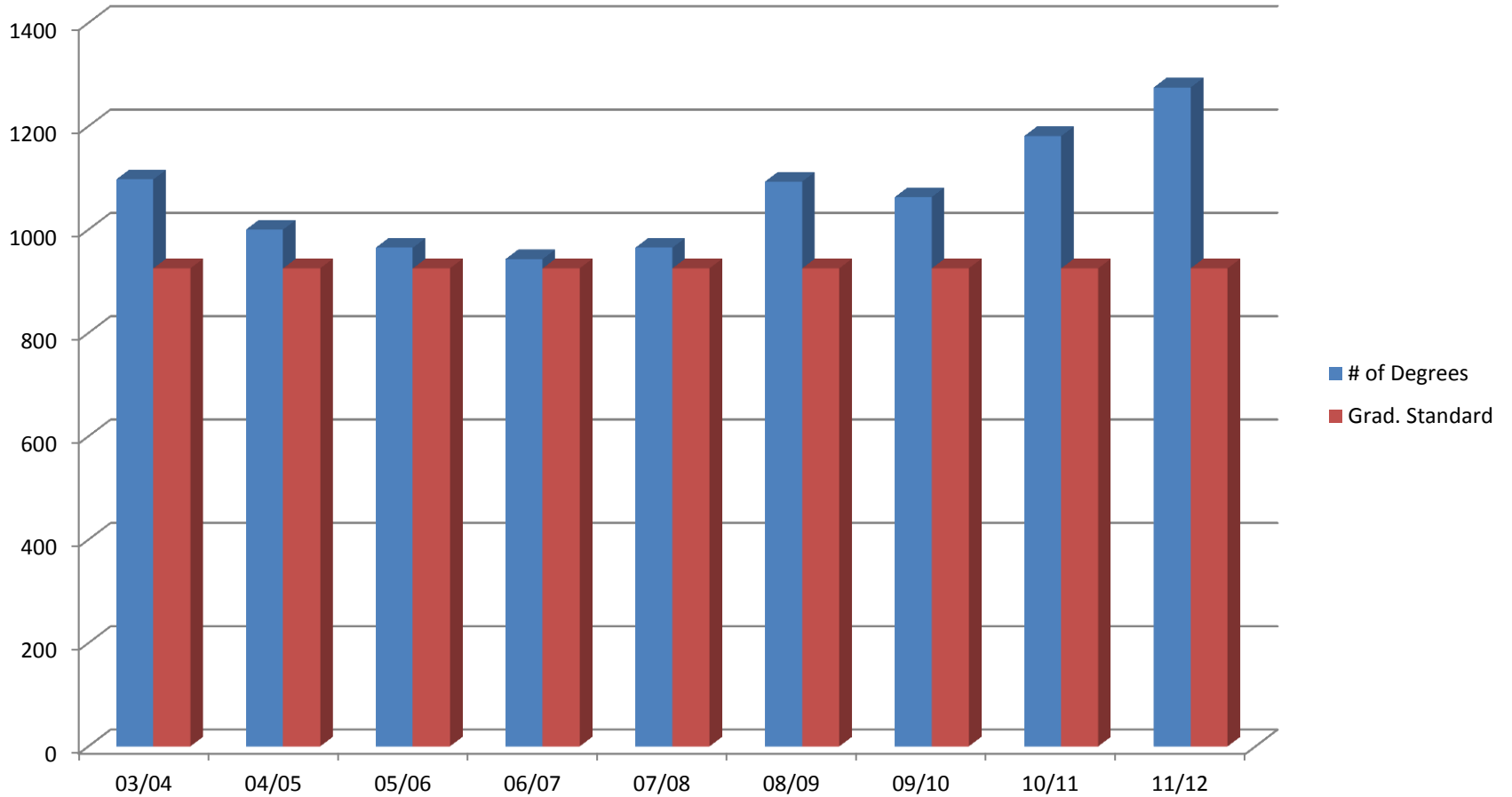
Student Retention Rate Measure

- The student retention rate is calculated by dividing the number of students returning each Fall semester for class (less the number of graduates/transfer students) by the number of students enrolled in the previous Fall semester.
- Significance: Demonstrates students' timely progress towards completion.
- The data is computed by the District's institutional research staff for each college.

Degree Completion Measure

- The degree completion measure equals the number of degrees (AA/AS/AAT/AST) awarded annually by students at a college.
- Significance: Measures students' success in completing degree requirements and obtaining a post-secondary degree.
- The data is calculated by the District's institutional research staff for each college and supplemented by Chancellor's Office.

Student Degree Completion

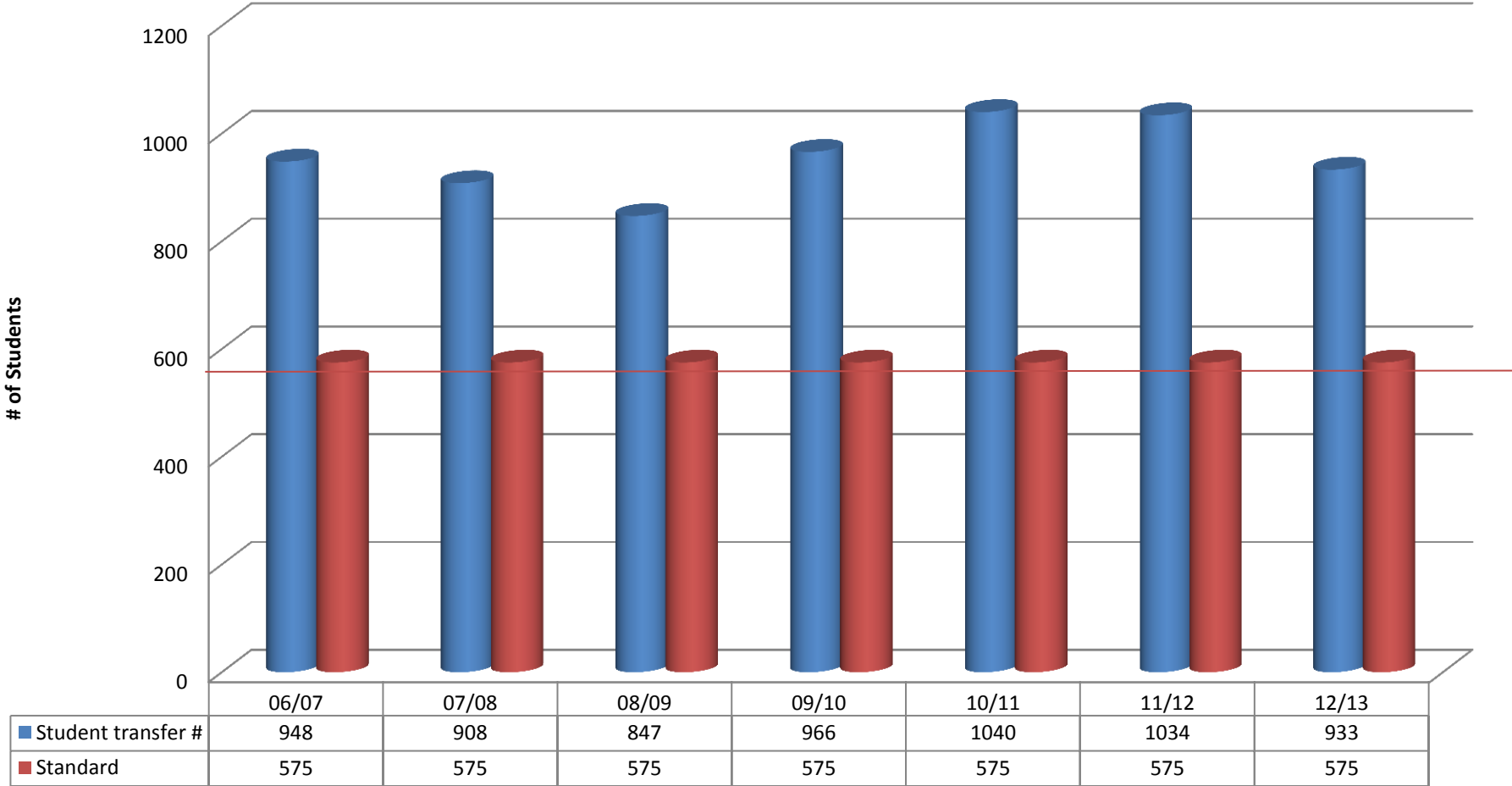


Student Transfer Measure

- The number of students annually that transfer to a 4 year college or university to continue their education towards a Bachelor's Degree.
- Significance: Measures success of students to complete transfer requirements and move towards a Bachelor's degree.
- The data is calculated by the District's institutional research staff for each college.

Student Transfer Numbers

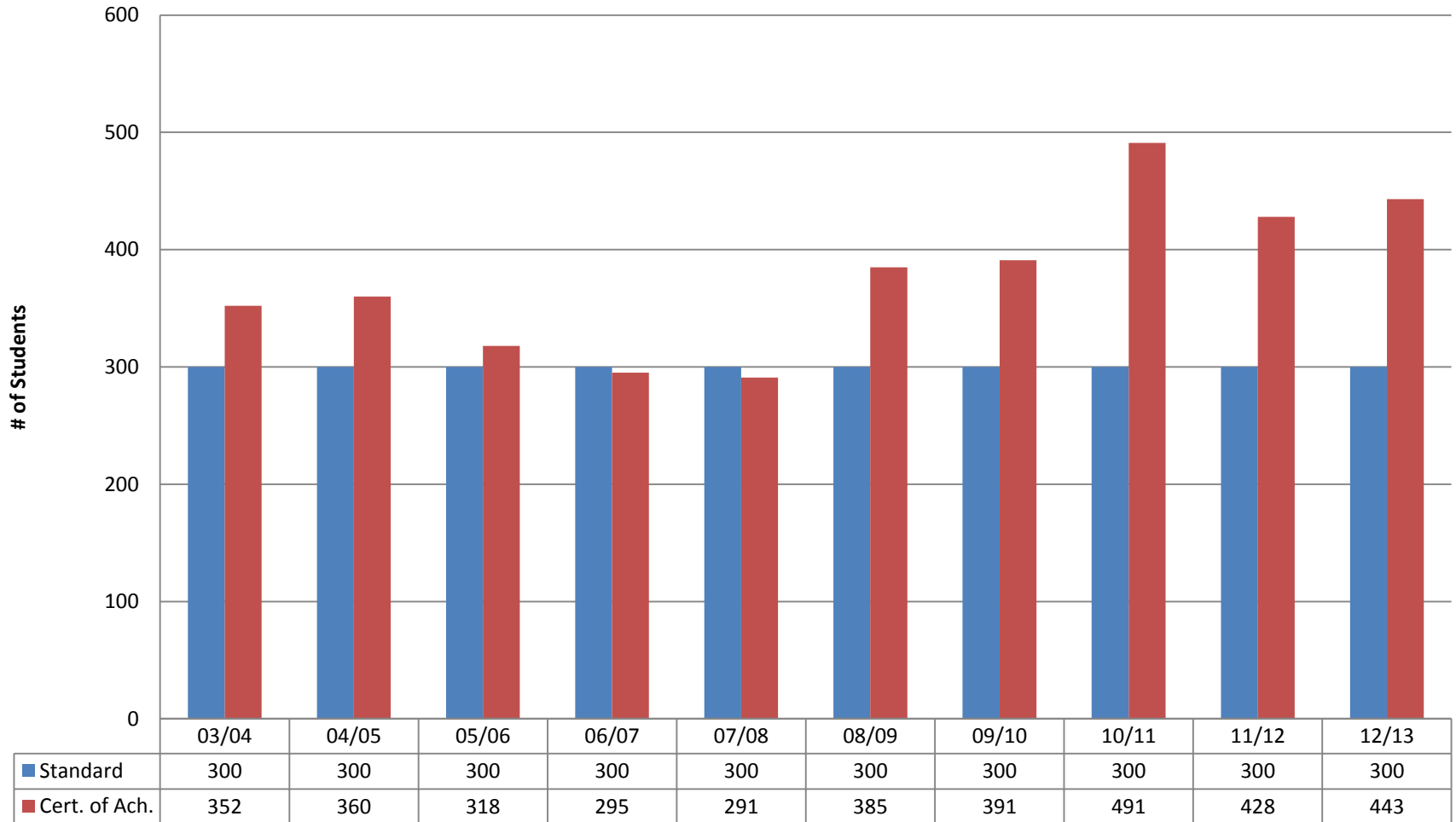
Student Transfer #



Certificate Completion Measure

- The number of students who annually are awarded a certificate of achievement in an occupational training or specialized training program.
- Significance: Demonstrates students' ability to complete occupational training programs and be prepared to move into the work force.
- The data is calculated by the District's institutional research staff for each college and supplemented by the Chancellor's Office.

Certificates of Achievement



Gainful Employment Measure

- USDE is discussing adding requiring the regional accreditation commissions to establish a requirement for colleges and universities to report on student success in obtaining gainful employment after graduation/completion of occupational training.
- The rate of success in student's gaining employment in the field of their academic training/study.
- Significance: Demonstrate the value of the training/education from your institution to the nation's economy.

Trustees' Responsibilities

- With input approve or adopt a Student Achievement Standard for each measure.
- Annually monitor performance/ reassess standards.
- Hold CEO accountable to meet adopted student achievement standards.
- Hold courageous conversations about results.
- Consider policy/budgetary modifications to help improve student success results.

What if?

- What if your college does not achieve the adopted standard?
 - *Should an institution not meet an adopted standard it must engage in high level institutional introspection.*
- Require CEO to present to the Board an action plan to remedy the situation as a result of such introspection.
- Monitor continued performance with interim benchmarks.

Student Achievement Measures

Discussion

- Why are such numbers important to your District? To your Community?
- Why should you consider the success rates for “prepared students” and “under-prepared students” match up in your District?
- Why should you be concerned with the success rates for sub-groups compare? (i.e. African American students, or men vs. women etc.)

Additional “Thru-put” Data

- Follows are samples of additional student measures that can be helpful in measuring student success in your institution.
- These are NOT required by the ACCJC but may be of a help to your Board of Trustees and your community.

Student Access Measures

- Student assessment results
 - English & Math
- Basic Skills Completion Rate
 - English & Math
- Basic Skills Completion Time
 - English & Math

(Measures also grouped by sex & race data)

Student Access Measures

- Student Connection
 - % of local high school students (penetration in to local market)
 - Concurrent enrollment #
 - College connection #
 - International students #
 - K-12 to College visits & programs #
 - Disaggregated Data (enrollment vs. population)

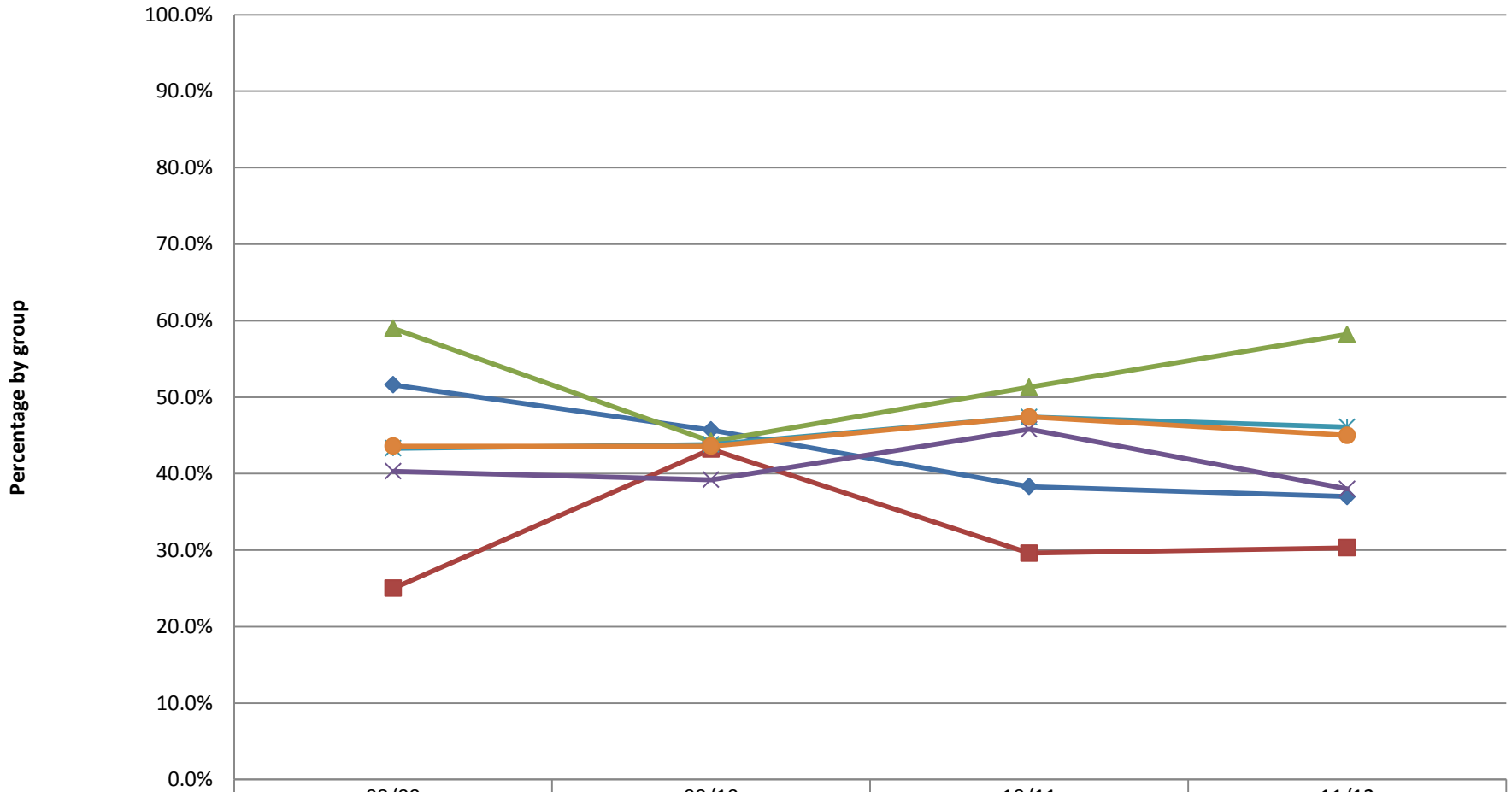
Student Goals

- Students Completing Education Planning
 - (% and #)
- Students Tracking Education Plan (%)
- Students Using Counseling / Advising
 - (contact hours & #'s)
- FTES / FTEF #
- Major Student Goal Categories (#)
- Disaggregated Data

Student Success (AA/AS)

- Associate Degrees
 - Number
 - % of Students with AA/AS goal
 - Comparison to:
 - Adopted Standard
 - Adopted Goal
- Disaggregated Data

Disaggregated Student Completion Rates

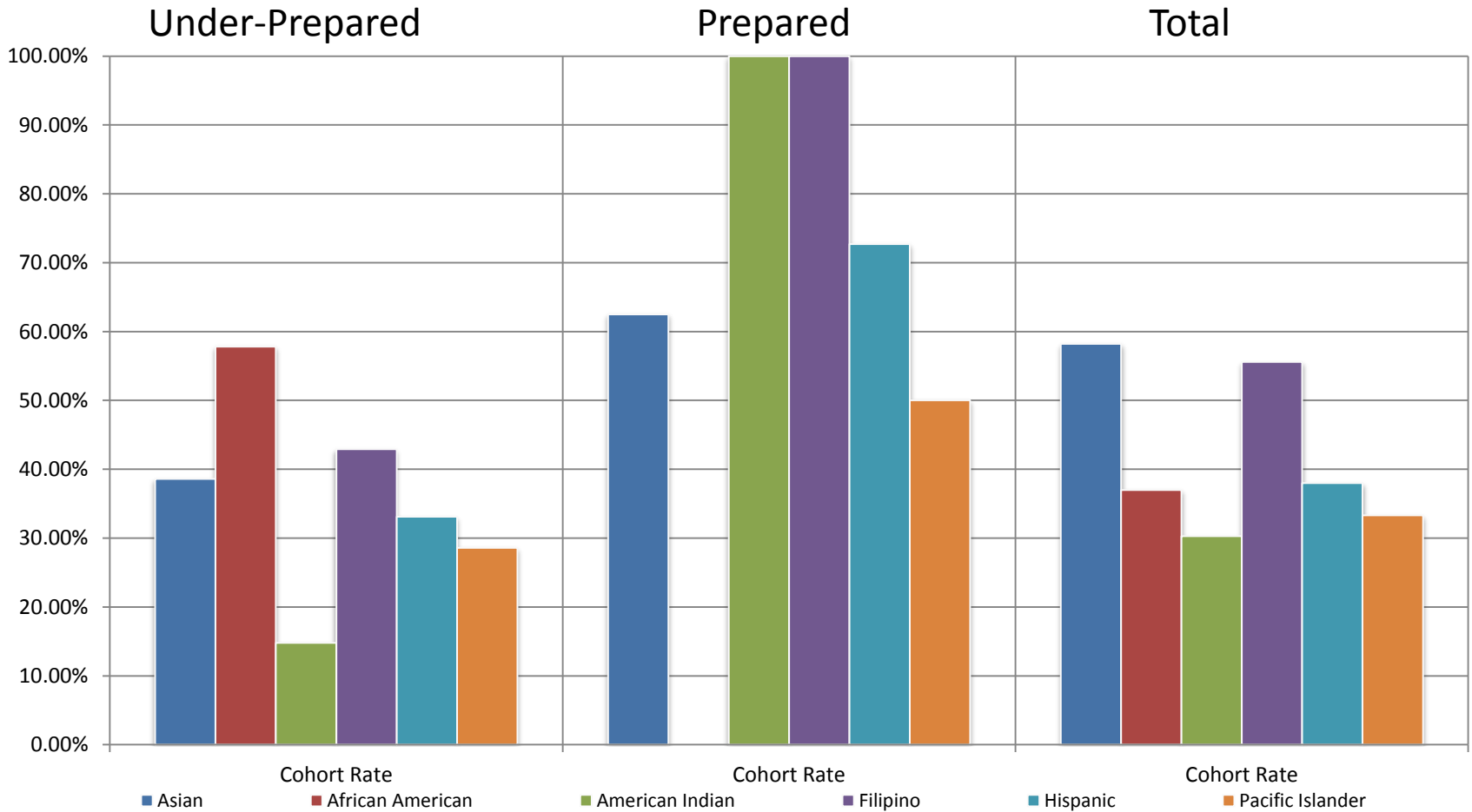


	08/09	09/10	10/11	11/12
◆ African American	51.6%	45.7%	38.3%	37.0%
■ American Indian	25.0%	43.2%	29.6%	30.3%
▲ Asian	59.0%	44.2%	51.3%	58.2%
✕ Hispanic	40.3%	39.2%	45.8%	38.0%
✱ White	43.3%	43.8%	47.4%	46.1%
● Total College	43.6%	43.6%	47.4%	45.0%

Student Success (Transfer)

- AAT / AST Degrees Available (# & %)
- Student Transfers (#)
 - U.C.
 - C.S.U.
 - In-State Private
 - Out of State
 - Total
 - Disaggregated Data
- Student Transfer Rate (% with transfer goal)

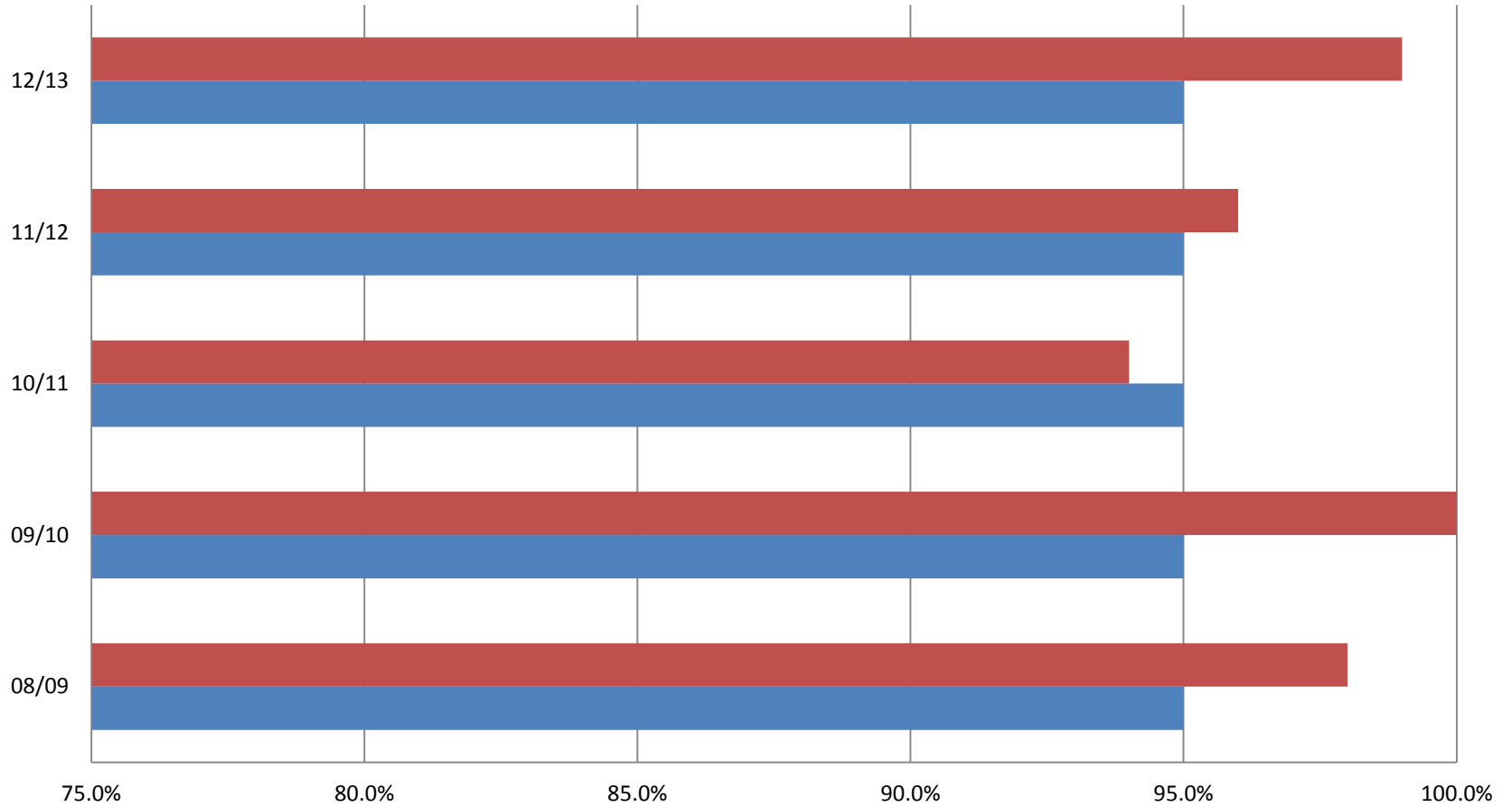
XYZ Community College



Certificates of Completion Data

- Completion rate (%) reported to C/O
- CTE Completion Rates
- Licensure Pass Rates
 - By Groups
- Employment Data
- Disaggregated Completion rates

R.N. Pass Rate



	08/09	09/10	10/11	11/12	12/13
Actual Pass Rate	98.0%	100.0%	94.0%	96.0%	99.0%
Standard	95.0%	95.0%	95.0%	95.0%	95.0%

Use of Technology

- # of Students using forms of distance education (MOOC's, Blended classes, etc.)
- Student completion rates (%)
 - Compare to traditional classes (%)
 - Disaggregated data (%)
- Cost for specialized courses vs. traditional courses (\$)

Conclusion

- Your District must adopt the following Student Achievement Standards:
 - **Student Course Completion Rates (%)**
 - **Student Retention Rate (%)**
 - **Student Degree Completion (#)**
 - **Student Transfer to 4 yr college/university (#)**
 - **Student Certificate Completion (#)**

Conclusion

- The college(s) must report the results to the ACCJC annually.
- The Board must monitor the college(s) performance in these 5 areas.
- Failure to achieve the adopted standards should result in the college holding discussions on how to improve.
- The Board must monitor the college(s) response and following results.

Conclusion

- Student Success is “Job 1”.
- Questions? Comments?